

Moe (Albert Street) Primary School (2142)

2008 School Level Report

Please check the data in this report. If, after comparing it with your own records, you deem it to be incorrect or incomplete, follow the directions on the following website:

- <http://www.education.vic.gov.au/management/schoolimprovement/performancecd/>
then select 'School Performance Reports'.
-
-

Contents

	Page No.
Privacy	3
SFO Density and LBOTE	4
Assessment of Reading Prep to Year 2	5-6
Teacher Judgments against the VELs	7-15
NAPLAN - Reading	16
- Writing	17
- Numeracy	18
AIM - Reading	19
- Mathematics	20
Teacher Assessment of Student Progress (PSD students)	21-22
Enrolment	23
Student Absence	24
Opinion Surveys - Parent	25
- Staff	26
Performance & Development Culture	27
Staff Sick Leave	28
Teaching Staff Retention	29
Bank Balances	30

Privacy

When reporting on the school's performance to the school community, care must be taken to avoid the disclosure of information that can directly or indirectly identify an individual. This may be a particular issue when reporting on the achievement of specific cohorts of students or the opinions of staff where there are small numbers.

In situations where privacy cannot be assured, schools may wish to report on the mean result or provide a written comment on school, year level or cohort performance.

Where the School Level Report is provided to school council members as part of any annual reporting process, or used for discussion on a school's performance, such as in consultation with the school community in the school self-evaluation process, it is important to remind school community members of their duty to only use this information for the purpose it was provided, and that the material must be kept confidential.

It is important to note that information that identifies an individual or can be used with other readily available information to identify a person is now protected by the *Information Privacy Act 2000* (<http://www.education.vic.gov.au/about/deptpolicies/informationprivacy.htm>).

SFO Density and LBOTE

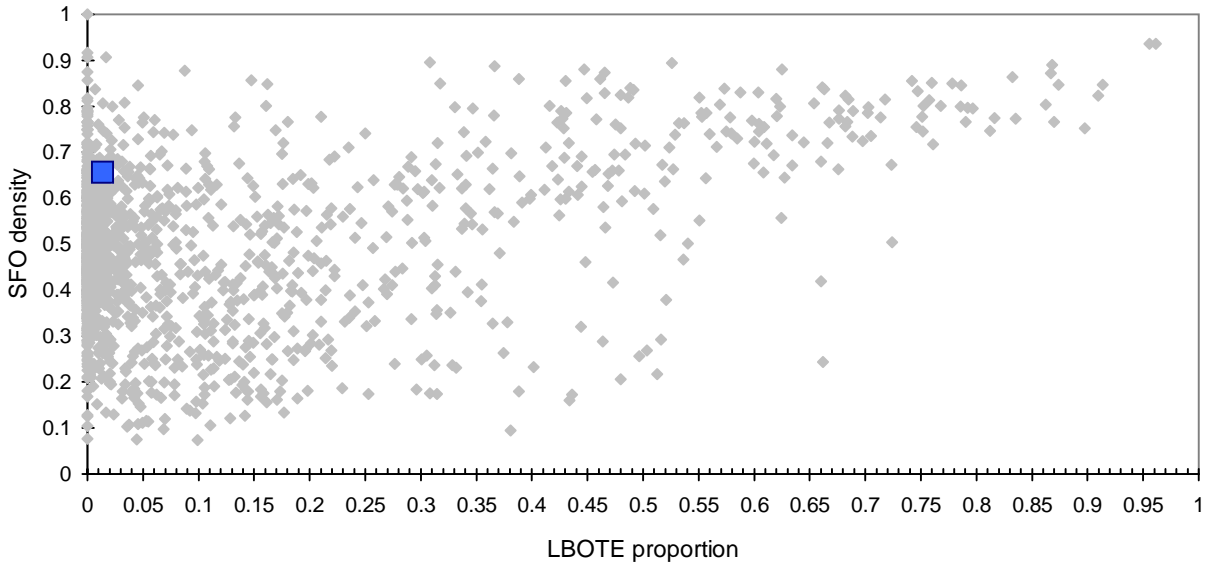
School no: 2142

School name: Moe (Albert Street) Primary School

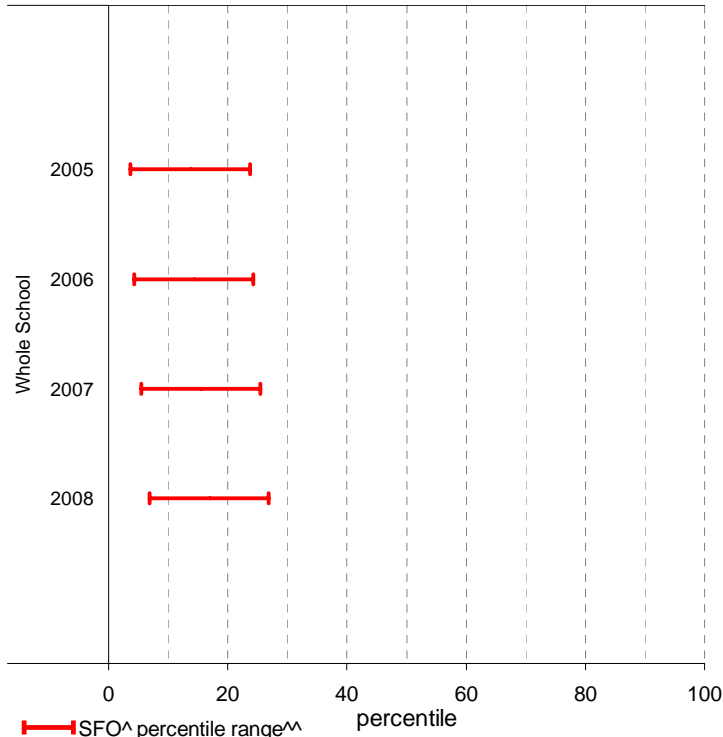
Explanation: The chart below plots the school's 2008 SFO (Student Family Occupation) density[^] and LBOTE (Language Background Other Than English) proportion* against that of all government schools. This school is highlighted as a square on the chart.

	2001	2002	2003	2004	2005	2006	2007	2008
SFO density [^] :					0.67	0.67	0.66	0.66
LBOTE proportion*:	0.01	0.02	0.02	0.01	0.02	0.02	0.01	0.01

School's 2008 SFO density and LBOTE proportion against that of all government schools



School's SFO[^] percentile range^{^^} over time



Notes: [^] The higher the SFO density, the lower the SFO percentile and the lower the socio-economic status (SES).
^{^^} The school's SFO percentile range shows the 20% of schools with an SFO Density most like this school.
 * From 2007, a student is LBOTE if either the student or one parent/guardian speaks a language other than English at home. Prior to 2007, a student is LBOTE if the student or one of the parents was born in a non-English speaking country.

Assessment of Reading: Prep to Year 2

School no: 2142

School name: Moe (Albert Street) Primary School

Explanation: Students' ability to read unsighted text is assessed at the end of each year. The data presented here includes 'deemed not capable' students.

More detailed information (including data where deemed not capable students are excluded) is available in the Assessment of Reading report, available from the School Performance Reports website.

Source of data: Data transmitted from school to DEECD via an online web-form.

	Prep										Year 1										Year 2												
	School									State	School									State	School									State			
	2004		2005		2006		2007		2008		2008	2004		2005		2006		2007		2008		2008	2004		2005		2006		2007		2008		2008
	(No.)	%	(No.)	%	(No.)	%	(No.)	%	(No.)	%	(No.)	%	(No.)	%	(No.)	%	(No.)	%	(No.)	%	(No.)	%	(No.)	%	(No.)	%	(No.)	%	(No.)	%	(No.)	%	
Level 1																																	
100%	(35)	94.6	(38)	77.6	(40)	90.9	(27)	79.4	(27)	69.2	69.0	(48)	88.9	(43)	100.0	(43)	100.0	(47)	95.9	(35)	92.1	94.7											
90-99%	(2)	5.4	(10)	20.4	(3)	6.8	(4)	11.8	(7)	17.9	25.4	(3)	5.6					(1)	2.0	(2)	5.3	4.7											
80-89%										2.3		(1)	1.9							(1)	2.6	0.2											
51-79%			(1)	2.0					(2)	5.1	1.5											0.2											
50% or below					(1)	2.3	(3)	8.8	(1)	2.6	1.7	(2)	3.7					(1)	2.0			0.3											
Total	(37)	100.0	(49)	100.0	(44)	100.0	(34)	100.0	(39)	100.0	100.0	(54)	100.0	(43)	100.0	(43)	100.0	(49)	100.0	(38)	100.0	100.0											
Subtotal 90-100%	(37)	100.0	(48)	98.0	(43)	97.7	(31)	91.2	(34)	87.2	94.5	(51)	94.4	(43)	100.0	(43)	100.0	(48)	98.0	(37)	97.4	99.4											
Level 5																																	
100%	(10)	27.0	(23)	46.9	(24)	54.5	(12)	35.3	(13)	33.3	45.3	(45)	83.3	(43)	100.0	(40)	93.0	(44)	89.8	(32)	84.2	81.0	(52)	100.0	(44)	93.6	(39)	100.0	(37)	97.4	(45)	95.7	90.4
90-99%	(18)	48.6	(11)	22.4	(10)	22.7	(8)	23.5	(12)	30.8	36.1	(5)	9.3					(3)	6.1	(3)	7.9	16.9			(2)	4.3			(1)	2.1	8.8		
80-89%	(4)	10.8	(4)	8.2	(1)	2.3	(2)	5.9	(1)	2.6	5.2				(1)	2.3				(1)	2.6	0.8									0.3		
51-79%	(2)	5.4	(4)	8.2	(1)	2.3	(2)	5.9	(1)	2.6	3.6				(1)	2.3				(1)	2.6	0.4									0.1		
50% or below	(3)	8.1	(7)	14.3	(8)	18.2	(10)	29.4	(12)	30.8	9.8	(4)	7.4		(1)	2.3	(2)	4.1	(1)	(1)	2.6	1.0			(1)	2.1		(1)	2.6	(1)	2.1	0.4	
Total	(37)	100.0	(49)	100.0	(44)	100.0	(34)	100.0	(39)	100.0	100.0	(54)	100.0	(43)	100.0	(43)	100.0	(49)	100.0	(38)	100.0	100.0	(52)	100.0	(47)	100.0	(39)	100.0	(38)	100.0	(47)	100.0	100.0
Subtotal 90-100%	(28)	75.7	(34)	69.4	(34)	77.3	(20)	58.8	(25)	64.1	81.3	(50)	92.6	(43)	100.0	(40)	93.0	(47)	95.9	(35)	92.1	97.9	(52)	100.0	(46)	97.9	(39)	100.0	(37)	97.4	(46)	97.9	99.2
Level 15																																	
100%												(16)	29.6	(15)	34.9	(19)	44.2	(13)	26.5	(8)	21.1	37.1	(37)	71.2	(30)	63.8	(26)	66.7	(28)	73.7	(27)	57.4	62.9
90-99%												(24)	44.4	(14)	32.6	(12)	27.9	(23)	46.9	(12)	31.6	49.2	(14)	26.9	(13)	27.7	(11)	28.2	(6)	15.8	(16)	34.0	33.2
80-89%												(4)	7.4	(8)	18.6	(5)	11.6	(3)	6.1	(8)	21.1	6.3			(3)	6.4	(2)	5.1	(2)	5.3	(3)	6.4	1.8
51-79%												(1)	1.9	(3)	7.0	(4)	9.3	(6)	12.2	(5)	13.2	3.0									0.8		
50% or below												(9)	16.7	(3)	7.0	(3)	7.0	(4)	8.2	(5)	13.2	4.3	(1)	1.9	(1)	2.1		(2)	5.3	(1)	2.1	1.4	
Total												(54)	100.0	(43)	100.0	(43)	100.0	(49)	100.0	(38)	100.0	100.0	(52)	100.0	(47)	100.0	(39)	100.0	(38)	100.0	(47)	100.0	100.0
Subtotal 90-100%												(40)	74.1	(29)	67.4	(31)	72.1	(36)	73.5	(20)	52.6	86.4	(51)	98.1	(43)	91.5	(37)	94.9	(34)	89.5	(43)	91.5	96.1
Level 20																																	
100%																							(34)	65.4	(21)	44.7	(25)	64.1	(21)	55.3	(27)	57.4	47.4
90-99%																							(17)	32.7	(21)	44.7	(12)	30.8	(14)	36.8	(15)	31.9	47.1
80-89%																									(4)	8.5	(1)	2.6		(3)	6.4	2.4	
51-79%																										(1)	2.6				0.9		
50% or below																							(1)	1.9	(1)	2.1		(3)	7.9	(2)	4.3	2.2	
Total																							(52)	100.0	(47)	100.0	(39)	100.0	(38)	100.0	(47)	100.0	100.0
Subtotal 90-100%																							(51)	98.1	(42)	89.4	(37)	94.9	(35)	92.1	(42)	89.4	94.5

	2004	2005	2006	2007	2008	2004	2005	2006	2007	2008	2004	2005	2006	2007	2008
No. of students DNC ¹ :	0	0	1	1	1	2	0	2	1	0	1	2	2	2	3
No. of students at risk ² :	0	1	1	3	5	4	0	3	2	3	1	4	2	4	4

Notes:

¹ Students can be DNC (deemed not capable) only if they meet one of the conditions (insufficient English, receiving D&I funding, insufficient attendance at the school or referred from Reading Recovery) AND read below the minimum standard.

² The number of students at risk is the number of students reading at less than 90% accuracy at Level 1 for Prep, Level 5 for Year 1 or Level 15 for Year 2.

Assessment of Reading: Prep to Year 2

School no: 2142

School name: Moe (Albert Street) Primary School

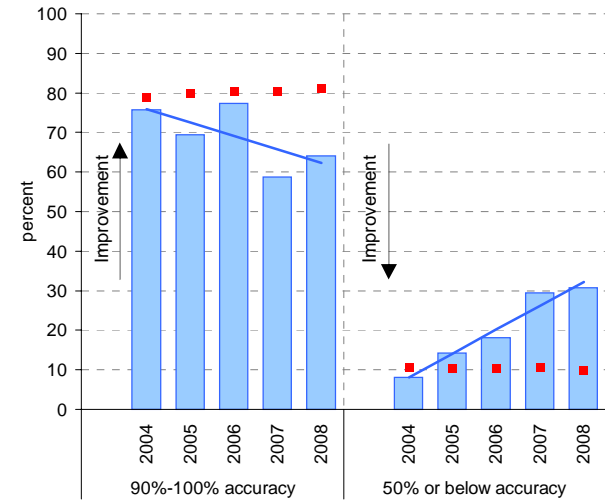
Explanation: Students' ability to read unsighted text is assessed at the end of each year.

Source of data: Data transmitted from school to DEECD via an online web-form.

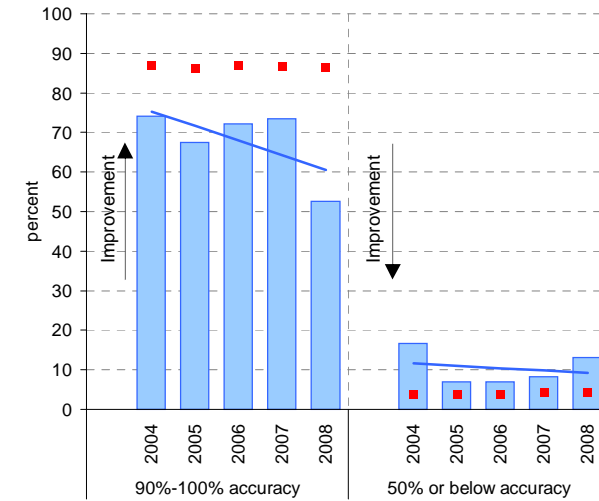
Notes: * The school trendline is being trialled. It is only plotted when there is data for each calendar year.

^ This data is highly skewed, with a lot of schools obtaining the best possible result, particularly in Year 2. The maximum achievable percentile is therefore significantly less than 100.

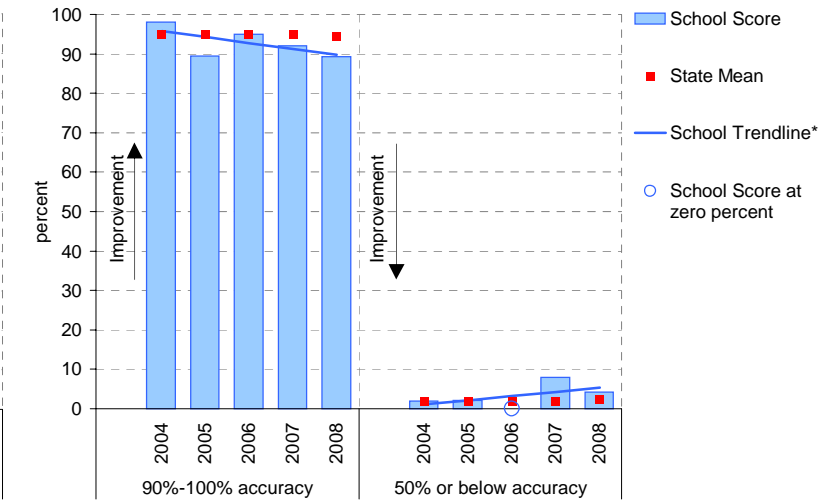
Year level: Prep
Text level: Level 5



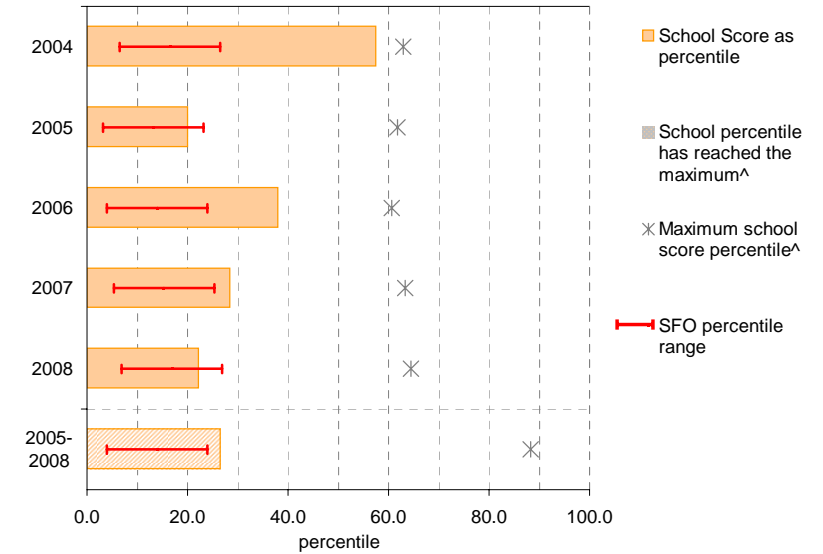
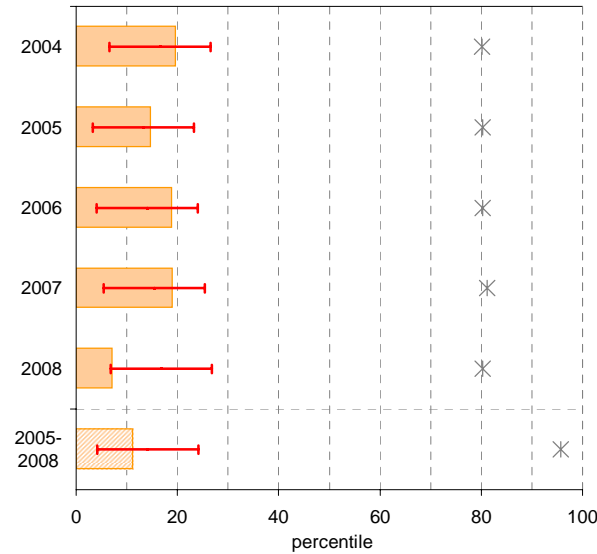
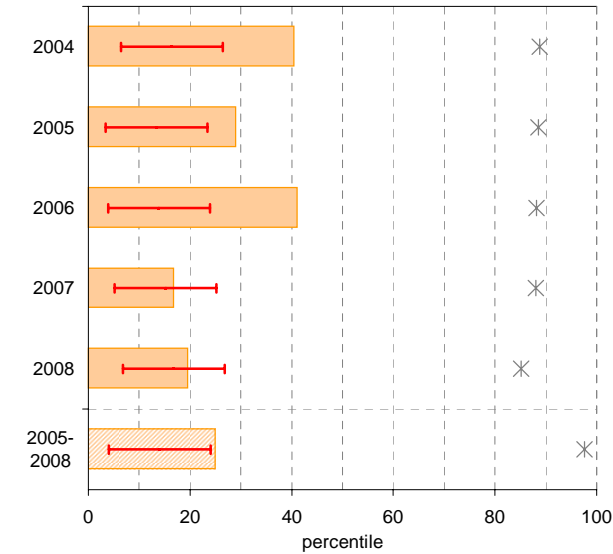
Year level: Year 1
Text level: Level 15



Year level: Year 2
Text level: Level 20



90%-100% accuracy as percentile against SFO percentile range



Teacher Judgments against the VELS - Year levels Prep-6 combined

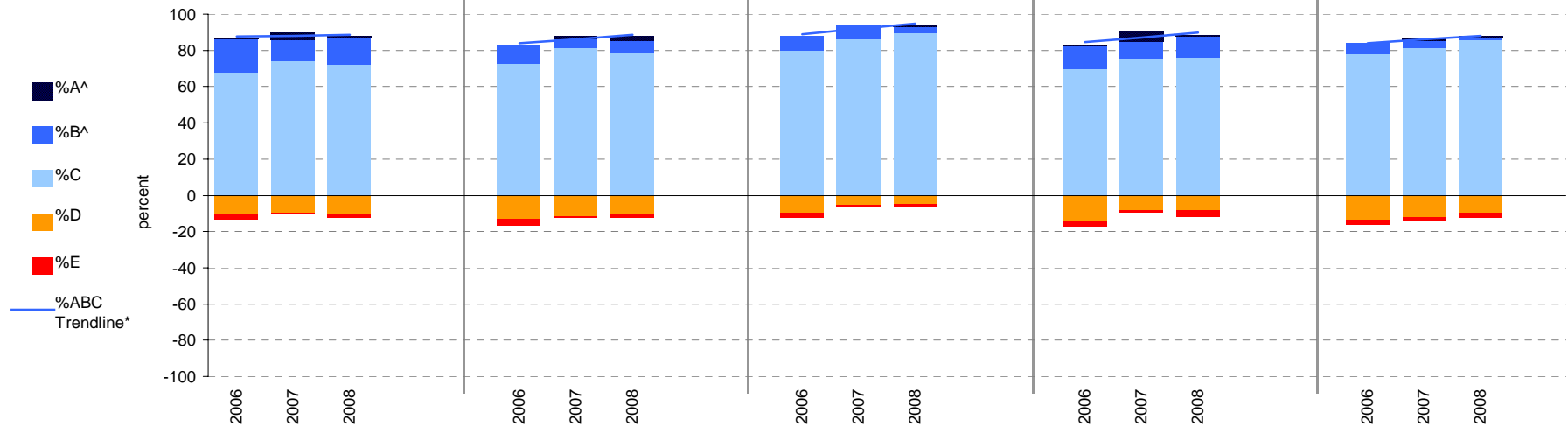
School no: 2142

School name: Moe (Albert Street) Primary School

Source of data: Data retrieved electronically from CASES21.

Explanation: Teacher judgments of student achievement against the VELS.

Year Levels:	Reading						Writing						Speaking & Listening						Number						Measurement, Chance & Data					
	total students	% A^	% B^	% C	% D	% E	total students	% A^	% B^	% C	% D	% E	total students	% A^	% B^	% C	% D	% E	total students	% A^	% B^	% C	% D	% E	total students	% A^	% B^	% C	% D	% E
Prep-6	297	1	19	68	11	2	297	0	10	73	13	4	297	0	8	80	9	3	296	0	13	70	14	3	296	0	6	78	14	2
(combined)	286	4	12	74	9	1	286	1	5	81	12	1	286	0	7	86	5	1	286	6	10	75	8	1	285	1	5	81	12	1
	278	0	15	72	11	1	278	2	7	78	10	2	278	0	3	90	5	2	278	0	12	76	8	4	278	0	2	86	9	3



Notes: * The school trendline is only plotted when there is data for each calendar year.
 ^ The cutoff between grades A and B changed in 2007. Further information is available on the following website:
<http://www.education.vic.gov.au/studentlearning/studentreports/schools/whatsnew.htm>.

Teacher Judgments against the VELS - English (primary)

School no: 2142

School name: Moe (Albert Street) Primary School

Source of data: Data retrieved electronically from CASES21.

Explanation: Teacher judgments of student achievement against the VELS.

Notes: * The school trendline is only plotted when there is data for each calendar year.

** In 2006, approx. 850 schools assessed their students against the 0.25 VELS scale. 2006 benchmarks are therefore based on a subset of schools.

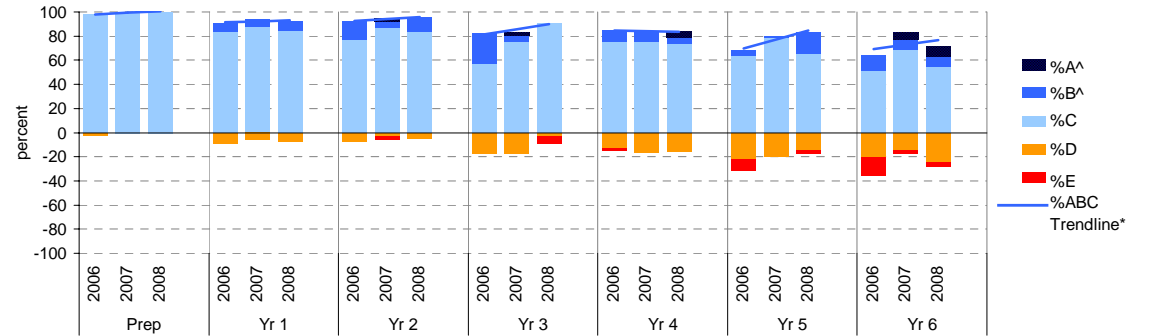
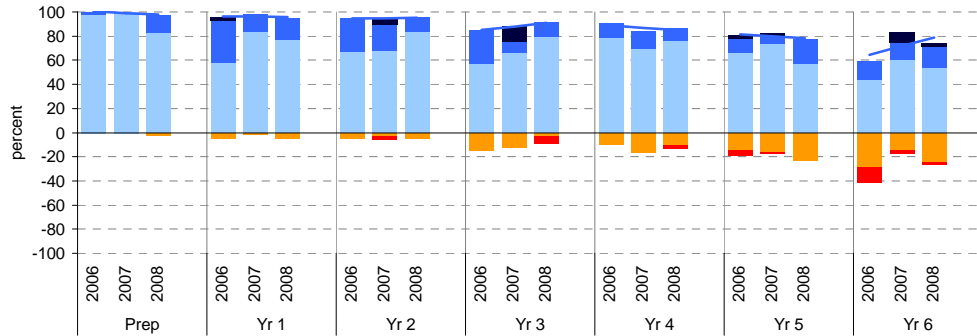
^ The cutoff between grades A and B changed in 2007. Further information is available on the following website: <http://www.education.vic.gov.au/studentlearning/studentreports/schools/whatsnew.htm>.

Reading

	total students	% of students by grade					Mean Score			total students	% of students by grade					Mean Score			
		A^	B^	C	D	E	School	State**			A^	B^	C	D	E	School	State**		
Prep	2006	43	0	2	98	0	0	0.91	1.01	Yr 4	2006	52	0	12	79	10	0	2.89	2.96
	2007	33	0	0	100	0	0	0.89	1.01		2007	36	0	14	69	17	0	2.88	2.97
	2008	40	0	15	83	3	0	0.90			2008	38	0	11	76	11	3	2.85	
Yr 1	2006	43	2	35	58	5	0	1.52	1.57	Yr 5	2006	41	2	12	66	15	5	3.37	3.44
	2007	48	0	15	83	2	0	1.48	1.57		2007	56	2	7	73	16	2	3.36	3.45
	2008	39	0	18	77	5	0	1.45			2008	35	0	20	57	23	0	3.38	
Yr 2	2006	39	0	28	67	5	0	2.01	2.04	Yr 6	2006	39	0	15	44	28	13	3.56	3.94
	2007	37	5	22	68	3	3	1.98	2.06		2007	35	9	14	60	14	3	3.89	3.95
	2008	43	0	12	84	5	0	1.99			2008	49	2	18	53	24	2	3.81	
Yr 3	2006	40	0	28	58	15	0	2.48	2.49										
	2007	41	12	10	66	12	0	2.46	2.50										
	2008	34	0	12	79	3	6	2.40											

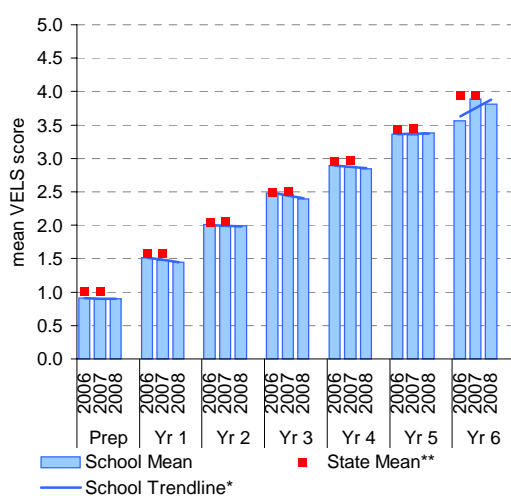
Writing

	total students	% of students by grade					Mean Score			total students	% of students by grade					Mean Score			
		A^	B^	C	D	E	School	State**			A^	B^	C	D	E	School	State**		
Prep	2006	43	0	0	98	2	0	0.90	0.97	Yr 4	2006	53	0	9	75	13	2	2.83	2.89
	2007	33	0	0	100	0	0	0.85	0.97		2007	36	0	8	75	17	0	2.79	2.91
	2008	40	0	0	100	0	0	0.89			2008	38	5	5	74	16	0	2.89	
Yr 1	2006	42	0	7	83	10	0	1.39	1.47	Yr 5	2006	41	0	5	63	22	10	3.23	3.38
	2007	48	0	6	88	6	0	1.45	1.49		2007	56	0	2	79	20	0	3.30	3.39
	2008	39	0	8	85	8	0	1.40			2008	35	0	17	66	14	3	3.36	
Yr 2	2006	39	0	15	77	8	0	1.95	1.95	Yr 6	2006	39	0	13	51	21	15	3.56	3.88
	2007	37	3	5	86	3	3	1.89	1.96		2007	35	6	9	69	14	3	3.85	3.89
	2008	43	0	12	84	5	0	1.98			2008	49	8	8	55	24	4	3.81	
Yr 3	2006	40	0	25	58	18	0	2.41	2.42										
	2007	41	2	5	76	17	0	2.32	2.43										
	2008	34	0	0	91	3	6	2.34											

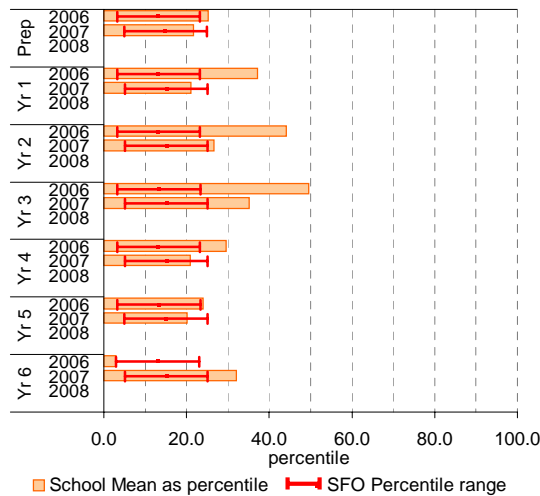


Reading

School Mean against State Mean

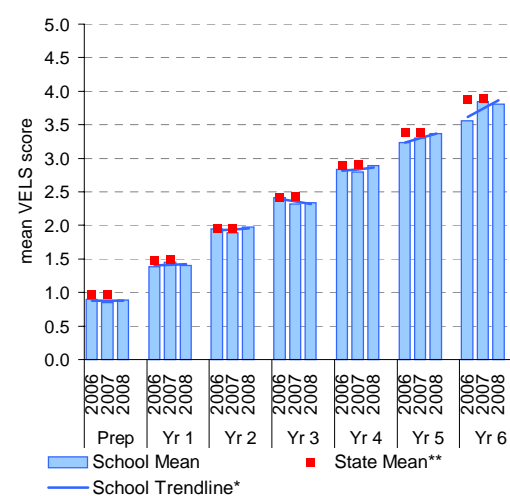


School Mean as percentile against SFO percentile range

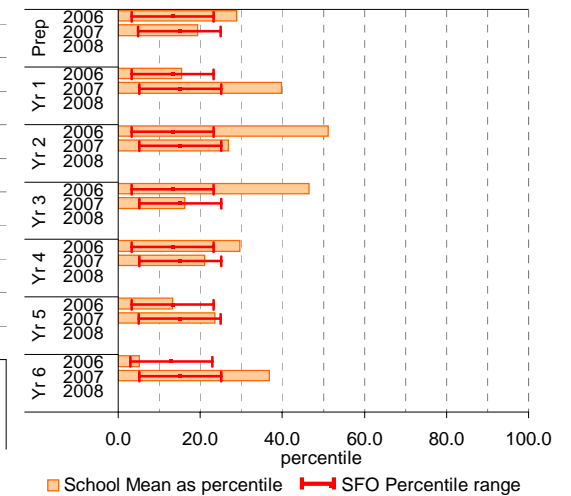


Writing

School Mean against State Mean



School Mean as percentile against SFO percentile range



Teacher Judgments against the VELS - English (primary)

School no: 2142

School name: Moe (Albert Street) Primary School

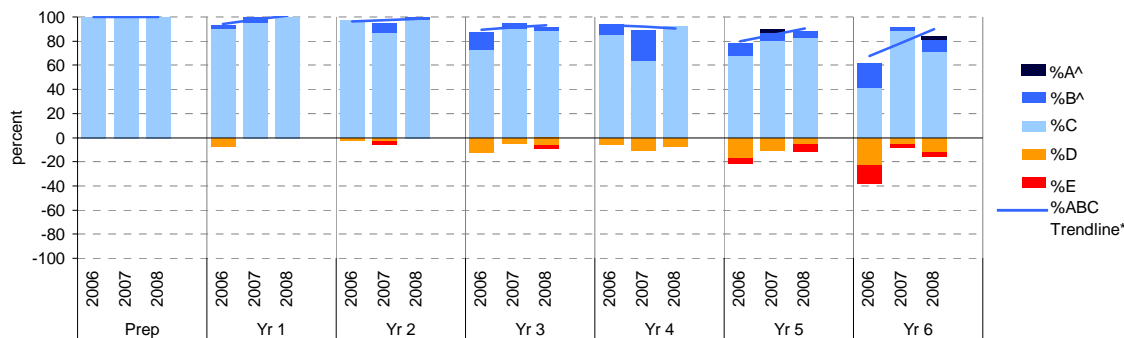
Source of data: Data retrieved electronically from CASES21.

Explanation: Teacher judgments of student achievement against the VELS.

Notes: * The school trendline is only plotted when there is data for each calendar year.
 ** In 2006, approx. 850 schools assessed their students against the 0.25 VELS scale. 2006 benchmarks are therefore based on a subset of schools.
 ^ The cutoff between grades A and B changed in 2007. Further information is available on the following website:
<http://www.education.vic.gov.au/studentlearning/studentreports/schools/whatsnew.htm>.

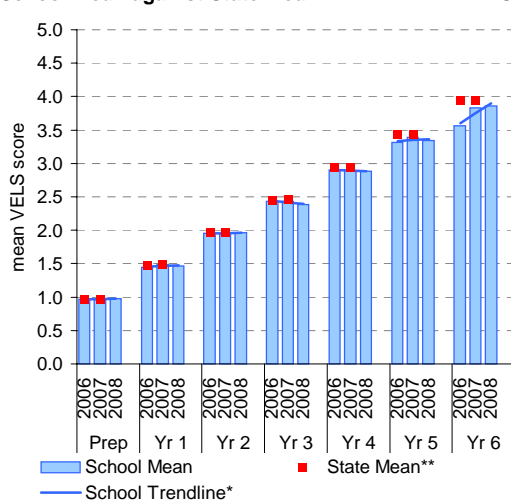
Speaking and Listening

	total students	% of students by grade					Mean Score			total students	% of students by grade					Mean Score			
		A^	B^	C	D	E	School	State**			A^	B^	C	D	E	School	State**		
Prep	2006	43	0	0	100	0	0	0.97	0.97	Yr 4	2006	53	0	9	85	6	0	2.91	2.94
	2007	33	0	0	100	0	0	0.97	0.97		2007	36	0	25	64	11	0	2.90	2.94
	2008	40	0	0	100	0	0	0.98			2008	38	0	0	92	8	0	2.88	
Yr 1	2006	42	0	2	90	7	0	1.45	1.48	Yr 5	2006	41	0	10	68	17	5	3.32	3.43
	2007	48	0	4	96	0	0	1.48	1.48		2007	56	2	7	80	11	0	3.39	3.43
	2008	39	0	0	100	0	0	1.46			2008	35	0	6	83	6	6	3.34	
Yr 2	2006	39	0	0	97	3	0	1.96	1.98	Yr 6	2006	39	0	21	41	23	15	3.56	3.93
	2007	37	0	8	86	3	3	1.95	1.98		2007	35	0	3	89	6	3	3.83	3.94
	2008	43	0	2	98	0	0	1.97			2008	49	2	10	71	12	4	3.86	
Yr 3	2006	40	0	15	73	13	0	2.44	2.45										
	2007	41	0	5	90	5	0	2.43	2.46										
	2008	34	0	3	88	6	3	2.38											

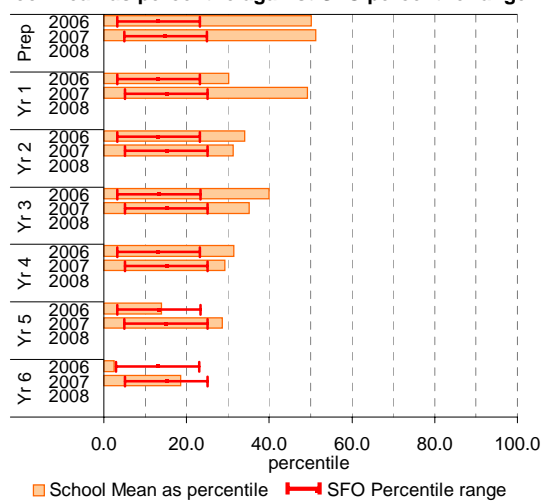


Speaking and Listening

School Mean against State Mean



School Mean as percentile against SFO percentile range



Teacher Judgments against the VELS - Mathematics (primary)

School no: 2142

School name: Moe (Albert Street) Primary School

Source of data: Data retrieved electronically from CASES21.

Explanation: Teacher judgments of student achievement against the VELS.

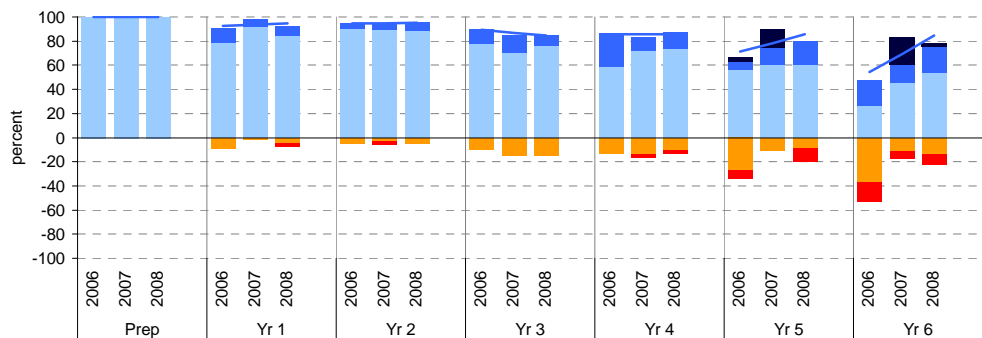
Notes: * The school trendline is only plotted when there is data for each calendar year.

** In 2006, approx. 850 schools assessed their students against the 0.25 VELS scale. 2006 benchmarks are therefore based on a subset of schools.

^ The cutoff between grades A and B changed in 2007. Further information is available on the following website: <http://www.education.vic.gov.au/studentlearning/studentreports/schools/whatsnew.htm>.

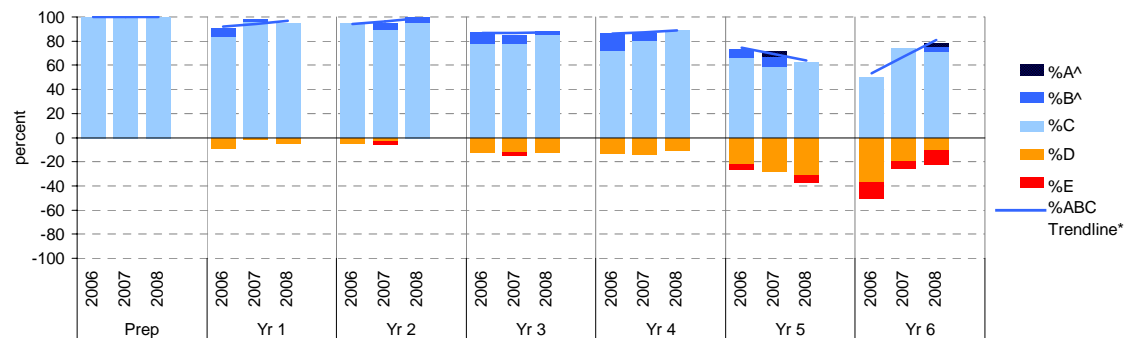
Number

	total students	% of students by grade					Mean Score			total students	% of students by grade					Mean Score			
		A^	B^	C	D	E	School	State**			A^	B^	C	D	E	School	State**		
Prep	2006	43	0	0	100	0	0	0.94	1.00	Yr 4	2006	53	0	28	58	13	0	2.95	2.95
	2007	33	0	0	100	0	0	0.92	1.00		2007	36	0	11	72	14	3	2.88	2.96
	2008	40	0	0	100	0	0	0.93			2008	38	0	13	74	11	3	2.87	
Yr 1	2006	42	0	12	79	10	0	1.45	1.51	Yr 5	2006	41	2	7	56	27	7	3.23	3.43
	2007	48	0	6	92	2	0	1.46	1.51		2007	56	14	14	61	11	0	3.46	3.44
	2008	39	0	8	85	5	3	1.40			2008	35	0	20	60	9	11	3.34	
Yr 2	2006	39	0	5	90	5	0	1.94	1.99	Yr 6	2006	38	0	21	26	37	16	3.63	3.93
	2007	37	0	5	89	3	3	1.93	1.99		2007	35	23	14	46	11	6	3.98	3.95
	2008	43	0	7	88	5	0	1.98			2008	49	2	22	53	14	8	3.84	
Yr 3	2006	40	0	13	78	10	0	2.42	2.46										
	2007	41	0	15	71	15	0	2.41	2.48										
	2008	34	0	9	76	15	0	2.36											



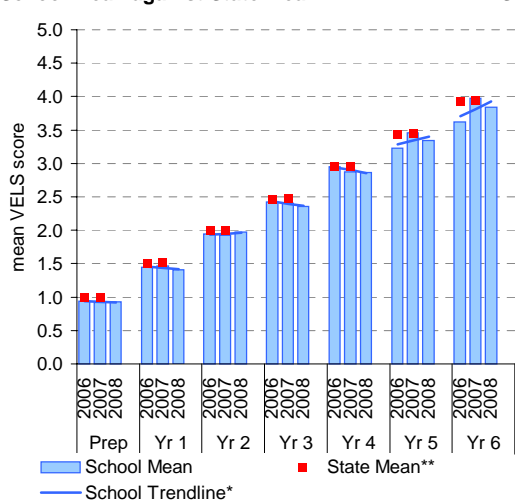
Measurement, Chance and Data

	total students	% of students by grade					Mean Score			total students	% of students by grade					Mean Score			
		A^	B^	C	D	E	School	State**			A^	B^	C	D	E	School	State**		
Prep	2006	43	0	0	100	0	0	0.97	0.97	Yr 4	2006	53	0	15	72	13	0	2.90	2.94
	2007	33	0	0	100	0	0	0.89	0.97		2007	36	0	6	81	14	0	2.84	2.95
	2008	40	0	0	100	0	0	0.95			2008	38	0	0	89	11	0	2.89	
Yr 1	2006	42	0	7	83	10	0	1.43	1.48	Yr 5	2006	41	0	7	66	22	5	3.26	3.42
	2007	48	0	2	96	2	0	1.45	1.49		2007	56	4	9	59	29	0	3.30	3.43
	2008	39	0	0	95	5	0	1.42			2008	35	0	0	63	31	6	3.20	
Yr 2	2006	39	0	0	95	5	0	1.94	1.97	Yr 6	2006	38	0	0	50	37	13	3.55	3.92
	2007	37	0	5	89	3	3	1.91	1.98		2007	35	0	0	74	20	6	3.76	3.93
	2008	43	0	5	95	0	0	1.99			2008	49	2	4	71	10	12	3.76	
Yr 3	2006	40	0	10	78	13	0	2.39	2.45										
	2007	40	0	8	78	13	3	2.37	2.46										
	2008	34	0	3	85	12	0	2.36											

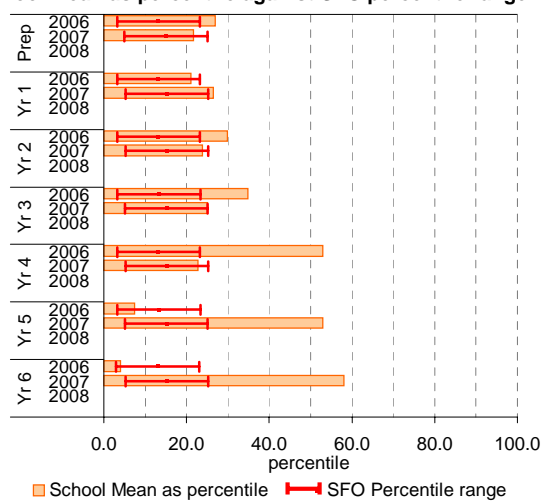


Number

School Mean against State Mean

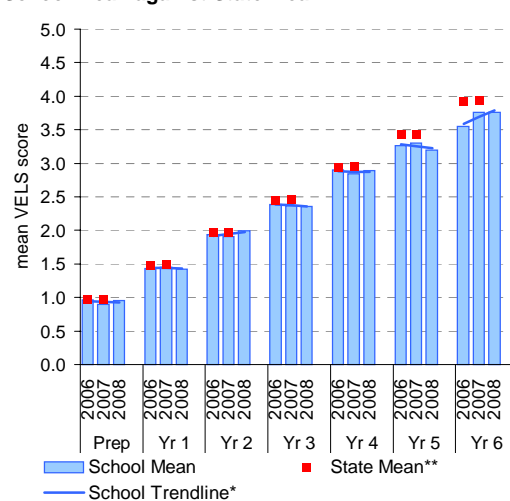


School Mean as percentile against SFO percentile range

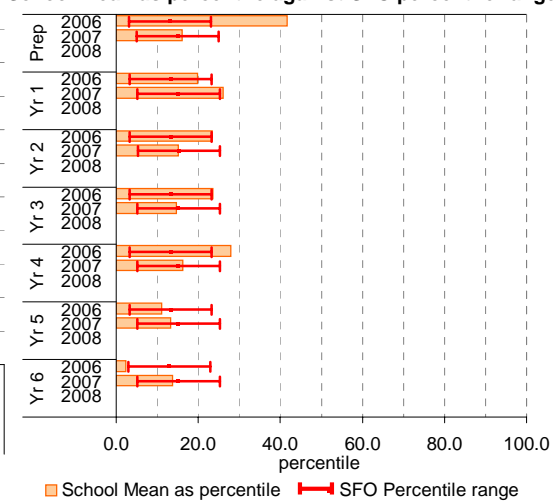


Measurement, Chance and Data

School Mean against State Mean



School Mean as percentile against SFO percentile range



Teacher Judgments against the VELS - English (primary)

School no: 2142
School name: Moe (Albert Street) Primary School
Source of data: Data retrieved electronically from CASES21.
Explanation: Teacher judgments of student achievement against the VELS.

Reading

Year Level	Year	Total ¹	Assessed ²	Level 1			Level 2				Level 3				Level 4				Level 5				Level 6				Level 6E			School mean	State mean*	Difference between school and state mean*
				0.00	0.50	1.00	1.25	1.50	1.75	2.00	2.25	2.50	2.75	3.00	3.25	3.50	3.75	4.00	4.25	4.50	4.75	5.00	5.25	5.50	5.75	6.00	6.25	6.50	6.75			
prep	2008	42	40	1	9	24	6																							0.90		
prep	2007	33	33		7	26																							0.89	1.01	-0.11	
yr1	2008	39	39		2		11	19	7																				1.45			
prep	2006	43	43		8	34	1																						0.91	1.01	-0.10	
yr1	2007	48	48		1		9	31	7																				1.48	1.57	-0.09	
yr2	2008	43	43				2	3	33	5																			1.99			
prep	2005																															
yr1	2006	43	43		1	1	10	15	14	1	1																		1.52	1.57	-0.05	
yr2	2007	37	37		1		1	6	19	8	2																		1.98	2.06	-0.08	
yr3	2008	34	34				2		1	8	19	4																	2.40			
yr1	2005																															
yr2	2006	39	39				2	6	20	10	1																		2.01	2.04	-0.03	
yr3	2007	41	41				1	4		10	17	4	5																2.46	2.50	-0.04	
yr4	2008	38	38						1	2	2	13	16	4															2.85			
yr2	2005																															
yr3	2006	40	40					1	5	4	19	8	3																2.48	2.49	0.00	
yr4	2007	36	36							2	4	9	16	5															2.88	2.97	-0.10	
yr5	2008	35	35								2	6	6	14	7														3.38			
yr3	2005																															
yr4	2006	52	52							3	2	15	26	6															2.89	2.96	-0.06	
yr5	2007	56	56							1	4	5	12	29	4	1													3.36	3.45	-0.09	
yr6	2008	49	49								1		6	6	13	13	9	1											3.81			
yr4	2005																															
yr5	2006	41	41							2	1	5	9	18	5	1													3.37	3.44	-0.08	
yr6	2007	35	35									1	2	3	10	11	5	3											3.89	3.95	-0.06	
yr5	2005																															
yr6	2006	39	39		1				1	2			1	2	9	7	10	6											3.56	3.94	-0.38	
yr6	2005																															

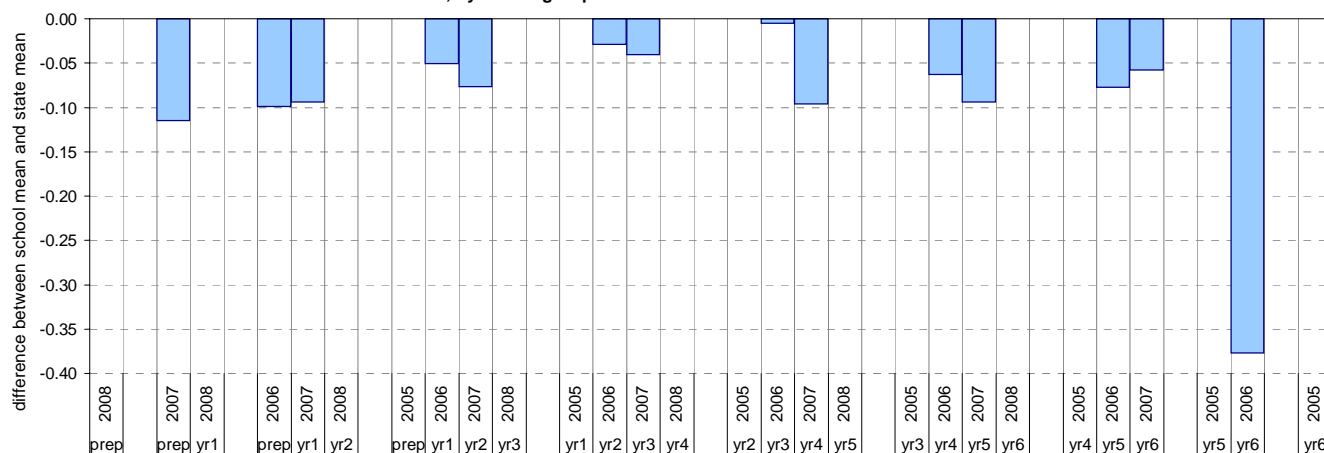
shading indicates a 'C' grade (at the expected standard) on the VELS scale.

¹ The total number of students eligible to be assessed. This figure will typically match, or be very close to, the Year Level enrolment.

² The number of students assessed against the VELS. The difference between this figure and the total (1) should be accounted for by students assessed against Individual Learning Plans and/or the ESL companion in the case of English.

* Note: In 2006, approx. 850 schools assessed their students against the 0.25 VELS scale. 2006 benchmarks are therefore based on a subset of schools.

Difference between school mean and state mean*, by cohort group



Teacher Judgments against the VELS - English (primary)

School no: 2142
School name: Moe (Albert Street) Primary School
Source of data: Data retrieved electronically from CASES21.
Explanation: Teacher judgments of student achievement against the VELS.

Writing

Year Level	Year	Total ¹	Assessed ²	Level 1			Level 2				Level 3				Level 4				Level 5				Level 6				Level 6E			School mean	State mean*	Difference between school and state mean*					
				0.00	0.50	1.00	1.25	1.50	1.75	2.00	2.25	2.50	2.75	3.00	3.25	3.50	3.75	4.00	4.25	4.50	4.75	5.00	5.25	5.50	5.75	6.00	6.25	6.50	6.75								
prep	2008	42	40	9	31																										0.89						
prep	2007	33	33	10	23																										0.85	0.97	-0.12				
yr1	2008	39	39	1	2	10	23	3																								1.40					
prep	2006	43	43	1	7	35																										0.90	0.97	-0.07			
yr1	2007	48	48		3	6	36	3																								1.45	1.49	-0.03			
yr2	2008	43	43			2	5	31	5																							1.98					
prep	2005																																				
yr1	2006	42	42	1	3	12	23	3																									1.39	1.47	-0.08		
yr2	2007	37	37	1		1	11	21	2	1																							1.89	1.96	-0.07		
yr3	2008	34	34			2		1	12	19																							2.34				
yr1	2005																																				
yr2	2006	39	39			3	9	21	5	1																								1.95	1.95	0.00	
yr3	2007	41	41				2	5	18	13	2	1																						2.32	2.43	-0.12	
yr4	2008	38	38						1	5	10	18	2	2																				2.89			
yr2	2005																																				
yr3	2006	40	40					7	10	13	10																								2.41	2.42	-0.01
yr4	2007	36	36						4	2	17	10	3																					2.79	2.91	-0.12	
yr5	2008	35	35						1	2	3	9	14	6																				3.36			
yr3	2005																																				
yr4	2006	53	53				1	4	3	18	22	5																						2.83	2.89	-0.06	
yr5	2007	56	56						6	5	18	26	1																					3.30	3.39	-0.09	
yr6	2008	49	49						1	1	2	10	15	12	4	4																		3.81			
yr4	2005																																				
yr5	2006	41	41						2	2	4	5	6	20	2																				3.23	3.38	-0.15
yr6	2007	35	35								1	3	2	12	12	3	1	1																3.85	3.89	-0.04	
yr5	2005																																				
yr6	2006	39	39			1	1	1	1	1	1	2	6	11	9	3	2																	3.56	3.88	-0.32	
yr6	2005																																				

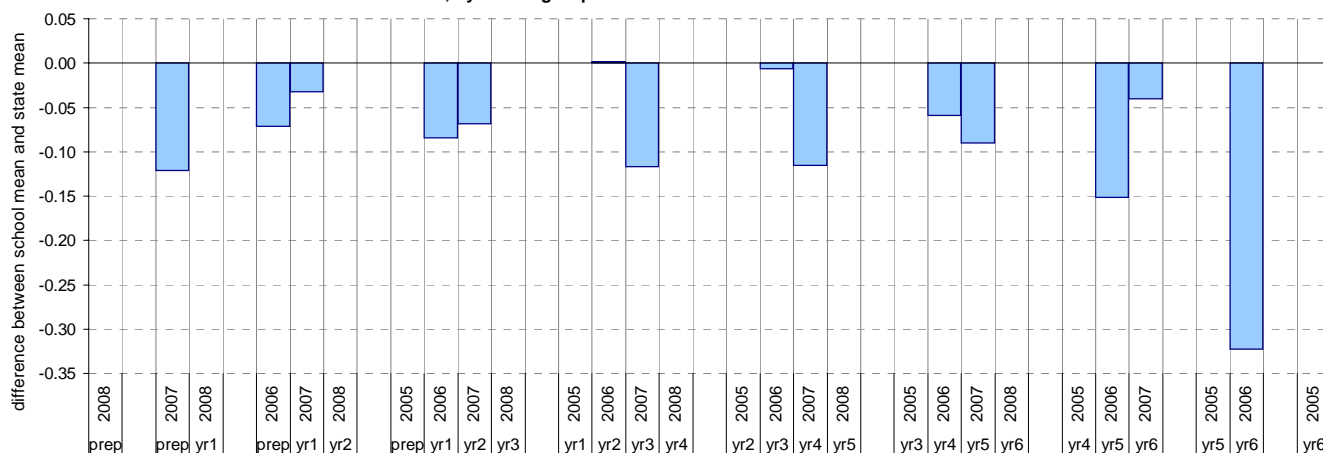
shading indicates a 'C' grade (at the expected standard) on the VELS scale.

¹ The total number of students eligible to be assessed. This figure will typically match, or be very close to, the Year Level enrolment.

² The number of students assessed against the VELS. The difference between this figure and the total (1) should be accounted for by students assessed against Individual Learning Plans and/or the ESL companion in the case of English.

* Note: In 2006, approx. 850 schools assessed their students against the 0.25 VELS scale. 2006 benchmarks are therefore based on a subset of schools.

Difference between school mean and state mean*, by cohort group



Teacher Judgments against the VELS - English (primary)

School no: 2142
School name: Moe (Albert Street) Primary School
Source of data: Data retrieved electronically from CASES21.
Explanation: Teacher judgments of student achievement against the VELS.

Speaking and Listening

Year Level	Year	Total ¹	Assessed ²	Level 1			Level 2			Level 3			Level 4			Level 5			Level 6			Level 6E			School mean	State mean*	Difference between school and state mean*		
				0.00	0.50	1.00	1.25	1.50	1.75	2.00	2.25	2.50	2.75	3.00	3.25	3.50	3.75	4.00	4.25	4.50	4.75	5.00	5.25	5.50				5.75	6.00
prep	2008	42	40		2	38																				0.98			
prep	2007	33	33		2	31																				0.97	0.97	0.00	
yr1	2008	39	39				6	33																				1.46	
prep	2006	43	43		3	40																				0.97	0.97	0.00	
yr1	2007	48	48				5	41	2																	1.48	1.48	0.00	
yr2	2008	43	43					7	35	1																		1.97	
prep	2005																												
yr1	2006	42	42		3		4	34	1																	1.45	1.48	-0.03	
yr2	2007	37	37		1		1		2	30	3															1.95	1.98	-0.03	
yr3	2008	34	34					1	1	1	8	22	1															2.38	
yr1	2005																												
yr2	2006	39	39					1	5	33																1.96	1.98	-0.02	
yr3	2007	41	41						1	1	8	29	2													2.43	2.46	-0.02	
yr4	2008	38	38									3	12	23														2.88	
yr2	2005																												
yr3	2006	40	40					1	4		5	24	6													2.44	2.45	-0.01	
yr4	2007	36	36								2	2	14	9	9											2.90	2.94	-0.05	
yr5	2008	35	35								2		2	12	17	2												3.34	
yr3	2005																												
yr4	2006	53	53								1	2	18	27	5											2.91	2.94	-0.04	
yr5	2007	56	56								1	5		18	27	4	1									3.39	3.43	-0.04	
yr6	2008	49	49									2			6	14	21	5	1									3.86	
yr4	2005																												
yr5	2006	41	41								1	1	3	4	8	20	4									3.32	3.43	-0.11	
yr6	2007	35	35									1		1	1	16	15	1								3.83	3.94	-0.11	
yr5	2005																												
yr6	2006	39	39		1					3			2	6	3	7	9	7	1							3.56	3.93	-0.37	
yr6	2005																												

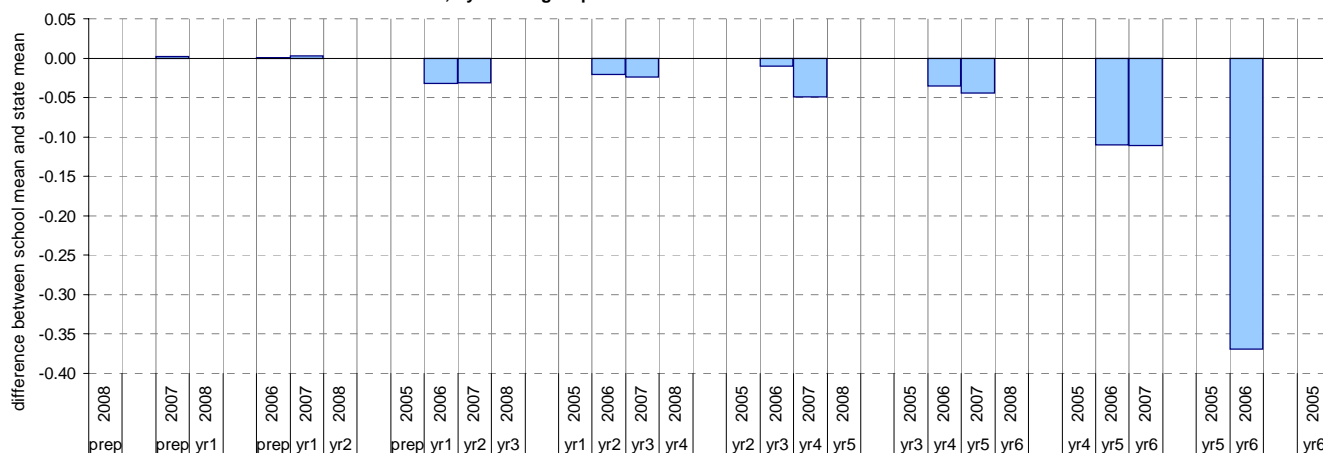
shading indicates a 'C' grade (at the expected standard) on the VELS scale.

¹ The total number of students eligible to be assessed. This figure will typically match, or be very close to, the Year Level enrolment.

² The number of students assessed against the VELS. The difference between this figure and the total (1) should be accounted for by students assessed against Individual Learning Plans and/or the ESL companion in the case of English.

* Note: In 2006, approx. 850 schools assessed their students against the 0.25 VELS scale. 2006 benchmarks are therefore based on a subset of schools.

Difference between school mean and state mean*, by cohort group



Teacher Judgments against the VELS - Mathematics (primary)

School no: 2142
School name: Moe (Albert Street) Primary School
Source of data: Data retrieved electronically from CASES21.
Explanation: Teacher judgments of student achievement against the VELS.

Number

Year Level	Year	Total ¹	Assessed ²	Level 1			Level 2				Level 3				Level 4				Level 5				Level 6				Level 6E			School mean	State mean*	Difference between school and state mean*									
				0.00	0.50	1.00	1.25	1.50	1.75	2.00	2.25	2.50	2.75	3.00	3.25	3.50	3.75	4.00	4.25	4.50	4.75	5.00	5.25	5.50	5.75	6.00	6.25	6.50	6.75												
prep	2008	42	40		6	34																									0.93										
prep	2007	33	33		5	28																								0.92	1.00	-0.07									
yr1	2008	39	39	1		2	8	25	3																							1.40									
prep	2006	43	43		5	38																											0.94	1.00	-0.06						
yr1	2007	48	48	1		8	36	3																									1.46	1.51	-0.05						
yr2	2008	43	43				2	3	35	3																								1.98							
prep	2005																																								
yr1	2006	42	42		4	6	27	5																											1.45	1.51	-0.06				
yr2	2007	37	37	1		1	6	27	2																										1.93	1.99	-0.07				
yr3	2008	34	34				2	3	10	16	3																									2.36					
yr1	2005																																								
yr2	2006	39	39				2	7	28	2																											1.94	1.99	-0.05		
yr3	2007	41	41				1	5	8	21	6																										2.41	2.48	-0.07		
yr4	2008	39	38					1	4	13	15	5																									2.87				
yr2	2005																																								
yr3	2006	40	40				4	10	21	4	1																											2.42	2.46	-0.04	
yr4	2007	36	36				1	2	3	6	20	4																										2.88	2.96	-0.08	
yr5	2008	35	35						4	1	2	6	15	7																								3.34			
yr3	2005																																								
yr4	2006	53	53				1	6	13	18	12	3																											2.95	2.95	0.01
yr5	2007	56	56						1	5	23	11	8	5	3																								3.46	3.44	0.02
yr6	2008	49	49						1		3	4	3	9	17	11	1																						3.84		
yr4	2005																																								
yr5	2006	41	41				1	2	5	6	14	9		3	1																								3.23	3.43	-0.21
yr6	2007	35	35							2		4	8	8	5	8																							3.98	3.95	0.03
yr5	2005																																								
yr6	2006	38	38				1		1	1	3	4	10	2	8	8																							3.63	3.93	-0.31
yr6	2005																																								

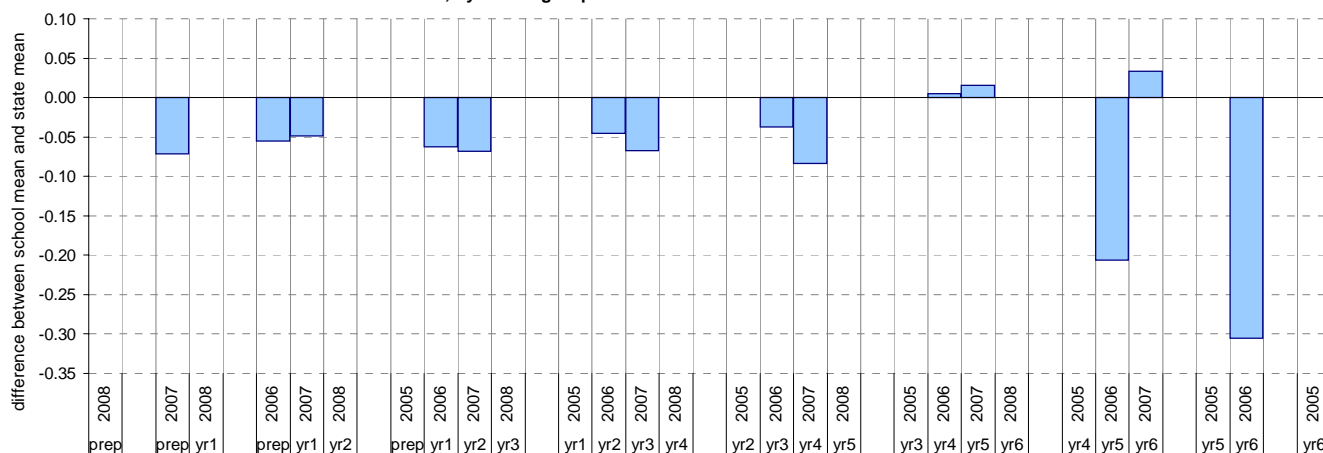
shading indicates a 'C' grade (at the expected standard) on the VELS scale.

¹ The total number of students eligible to be assessed. This figure will typically match, or be very close to, the Year Level enrolment.

² The number of students assessed against the VELS. The difference between this figure and the total (1) should be accounted for by students assessed against Individual Learning Plans and/or the ESL companion in the case of English.

* Note: In 2006, approx. 850 schools assessed their students against the 0.25 VELS scale. 2006 benchmarks are therefore based on a subset of schools.

Difference between school mean and state mean*, by cohort group



Teacher Judgments against the VELS - Mathematics (primary)

School no: 2142
 School name: Moe (Albert Street) Primary School
 Source of data: Data retrieved electronically from CASES21.
 Explanation: Teacher judgments of student achievement against the VELS.

Measurement, Chance and Data

Year Level	Year	Total ¹	Assessed ²	Level 1			Level 2				Level 3				Level 4				Level 5				Level 6				Level 6E			School mean	State mean*	Difference between school and state mean*	
				0.00	0.50	1.00	1.25	1.50	1.75	2.00	2.25	2.50	2.75	3.00	3.25	3.50	3.75	4.00	4.25	4.50	4.75	5.00	5.25	5.50	5.75	6.00	6.25	6.50	6.75				
prep	2008	42	40	4	36																										0.95		
prep	2007	33	33	7	26																									0.89	0.97	-0.08	
yr1	2008	39	39	2	8	29																									1.42		
prep	2006	43	43	3	40																									0.97	0.97	-0.01	
yr1	2007	48	48	1	8	38	1																						1.45	1.49	-0.03		
yr2	2008	43	43			3	38	2																							1.99		
prep	2005																																
yr1	2006	42	42	4	6	29	3																							1.43	1.48	-0.05	
yr2	2007	37	37	1	1	5	28	2																						1.91	1.98	-0.07	
yr3	2008	34	34			2	2	10	19	1																					2.36		
yr1	2005																																
yr2	2006	39	39		2	6	31																							1.94	1.97	-0.04	
yr3	2007	41	40		1	1	4	9	22	3																				2.37	2.46	-0.09	
yr4	2008	39	38					1	3	8	26																				2.89		
yr2	2005																																
yr3	2006	40	40			1	4	12	19	3	1																				2.39	2.45	-0.06
yr4	2007	36	36					3	2	12	17	2																			2.84	2.95	-0.11
yr5	2008	35	35					2	4	7	8	14																			3.20		
yr3	2005																																
yr4	2006	53	53					1	6	17	21	6	2																		2.90	2.94	-0.04
yr5	2007	56	56						5	11	17	16	5	2																	3.30	3.43	-0.13
yr6	2008	49	49						3	3	3	2	13	22	2	1															3.76		
yr4	2005																																
yr5	2006	41	41					1	1	3	6	12	15	3																	3.26	3.42	-0.16
yr6	2007	35	35								2	1	6	10	16																3.76	3.93	-0.17
yr5	2005																																
yr6	2006	38	38			1					4	4	10	11	8																3.55	3.92	-0.37
yr6	2005																																

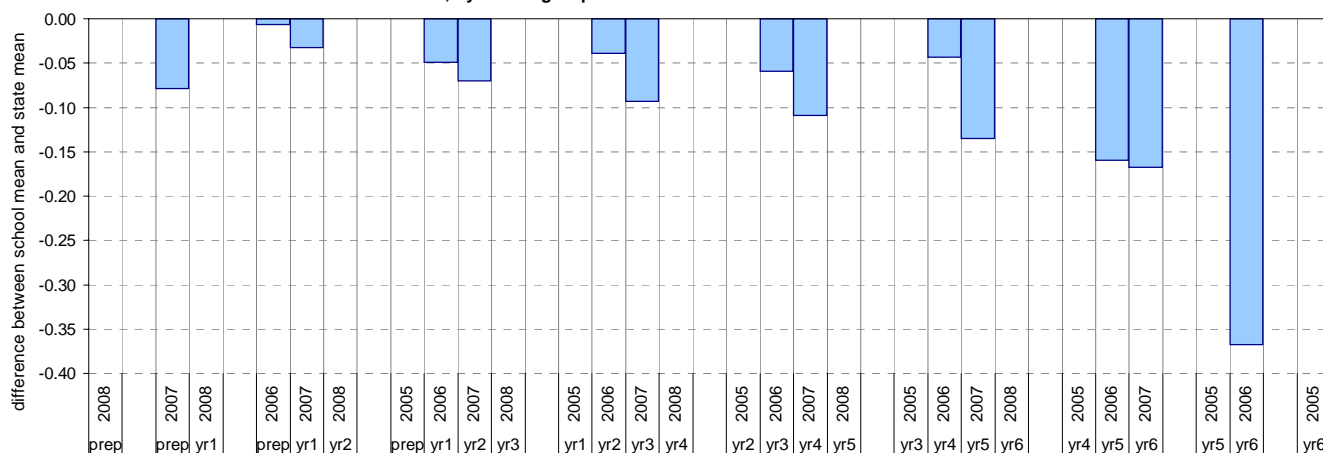
shading indicates a 'C' grade (at the expected standard) on the VELS scale.

¹ The total number of students eligible to be assessed. This figure will typically match, or be very close to, the Year Level enrolment.

² The number of students assessed against the VELS. The difference between this figure and the total (1) should be accounted for by students assessed against Individual Learning Plans and/or the ESL companion in the case of English.

* Note: In 2006, approx. 850 schools assessed their students against the 0.25 VELS scale. 2006 benchmarks are therefore based on a subset of schools.

Difference between school mean and state mean*, by cohort group



NAPLAN Year 3 and 5: Reading

School no: 2142

School name: Moe (Albert Street) Primary School

Source of data: Victorian Curriculum and Assessment Authority.

Explanation: The National Assessment Program - Literacy and Numeracy (NAPLAN) is conducted each year for students in Years 3, 5, 7 and 9. For more detailed NAPLAN data, refer to the NAPLAN Data Service website at <http://naplands.vcaa.vic.edu.au>. A reference guide for analysing NAPLAN data is available at <http://www.vcaa.vic.edu.au/vcaa/prep10/naplan/schools/analysingnaplandata.pdf>.

Notes: * % student participation = (students who participated in NAPLAN / February enrolments) * 100

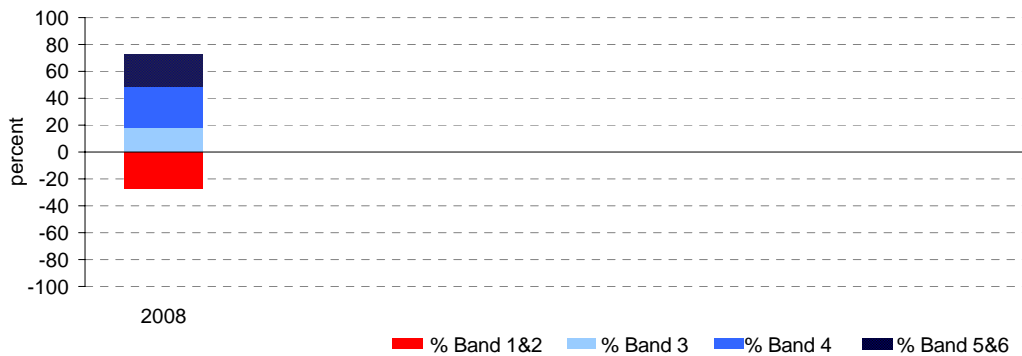
Year 3

	student participation		Percent of students by NAP Band						Mean Scaled Score	
	(n)	(%)*	Band 1	Band 2	Band 3	Band 4	Band 5	Band 6	School	State
2008	33	92	6	21	18	30	9	15	377.7	415.8

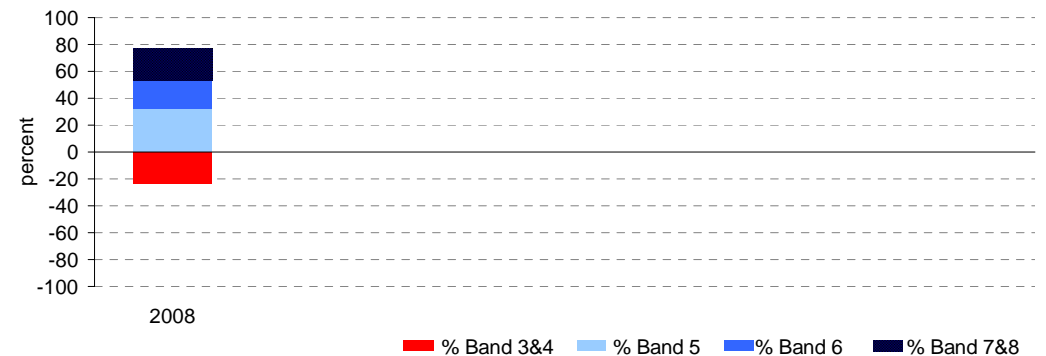
Year 5

	student participation		Percent of students by NAP Band						Mean Scaled Score	
	(n)	(%)*	Band 3	Band 4	Band 5	Band 6	Band 7	Band 8	School	State
2008	34	89	18	6	32	21	18	6	469.8	492.1

Percent of students by NAP Band

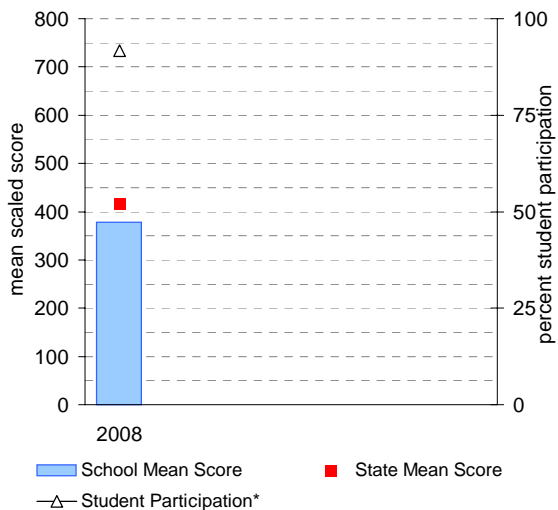


Percent of students by NAP Band

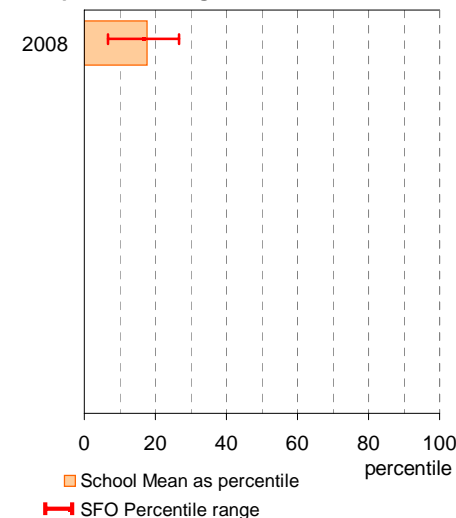


Year 3

School Mean against State Mean, including Participation

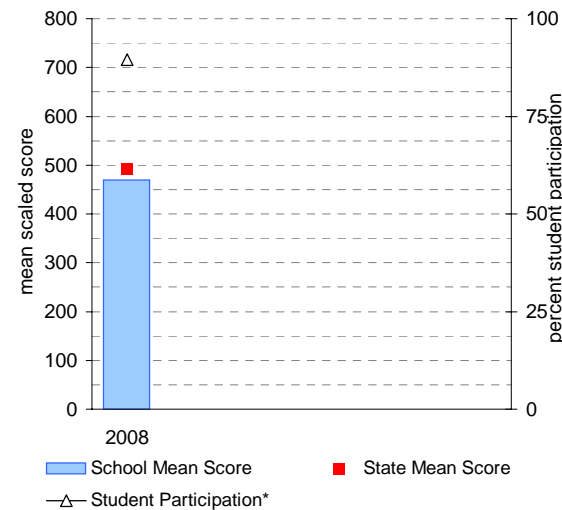


School Mean as percentile against SFO percentile range

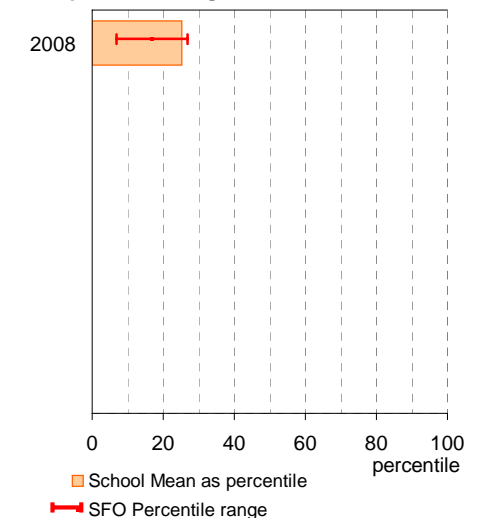


Year 5

School Mean against State Mean, including Participation



School Mean as percentile against SFO percentile range



NAPLAN Year 3 and 5: Writing

School no: 2142

School name: Moe (Albert Street) Primary School

Source of data: Victorian Curriculum and Assessment Authority.

Explanation: The National Assessment Program - Literacy and Numeracy (NAPLAN) is conducted each year for students in Years 3, 5, 7 and 9. For more detailed NAPLAN data, refer to the NAPLAN Data Service website at <http://naplands.vcaa.vic.edu.au>. A reference guide for analysing NAPLAN data is available at <http://www.vcaa.vic.edu.au/vcaa/prep10/naplan/schools/analysingnaplandata.pdf>.

Notes: * % student participation = (students who participated in NAPLAN / February enrolments) * 100

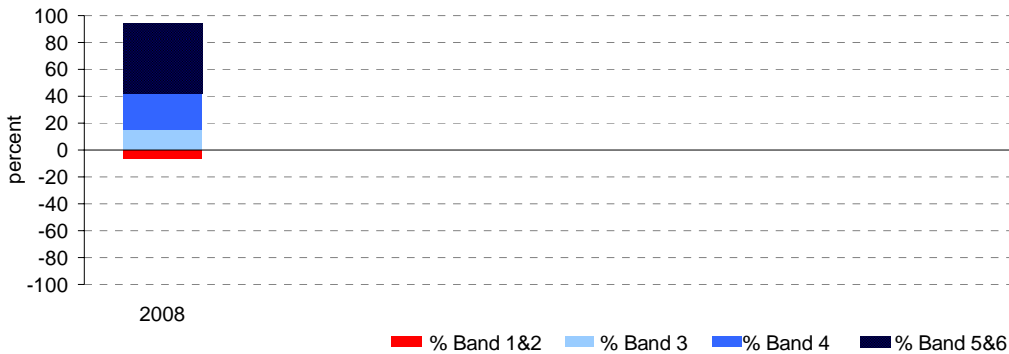
Year 3

	student participation		Percent of students by NAP Band						Mean Scaled Score	
	(n)	(%)*	Band 1	Band 2	Band 3	Band 4	Band 5	Band 6	School	State
2008	33	92	0	6	15	27	30	21	425.8	421.2

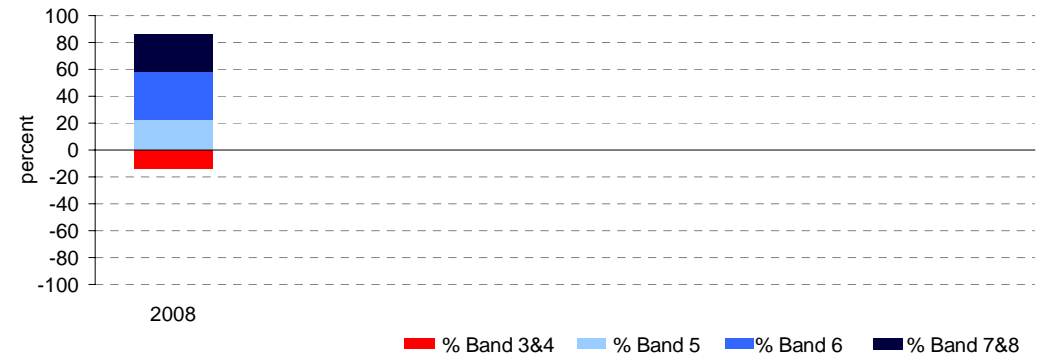
Year 5

	student participation		Percent of students by NAP Band						Mean Scaled Score	
	(n)	(%)*	Band 3	Band 4	Band 5	Band 6	Band 7	Band 8	School	State
2008	36	95	6	8	22	36	14	14	492.3	496.0

Percent of students by NAP Band

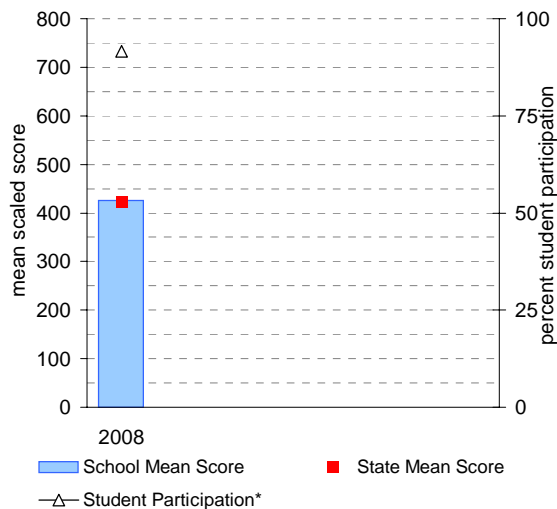


Percent of students by NAP Band

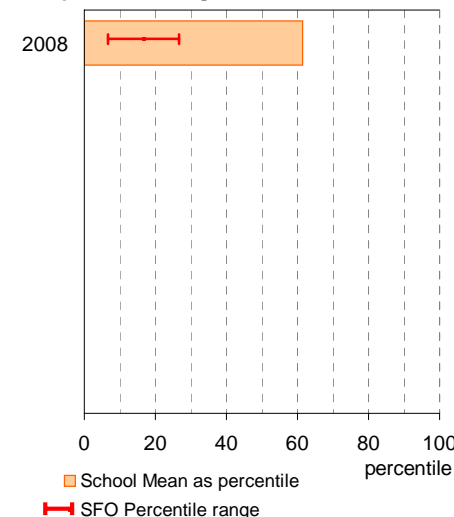


Year 3

School Mean against State Mean, including Participation

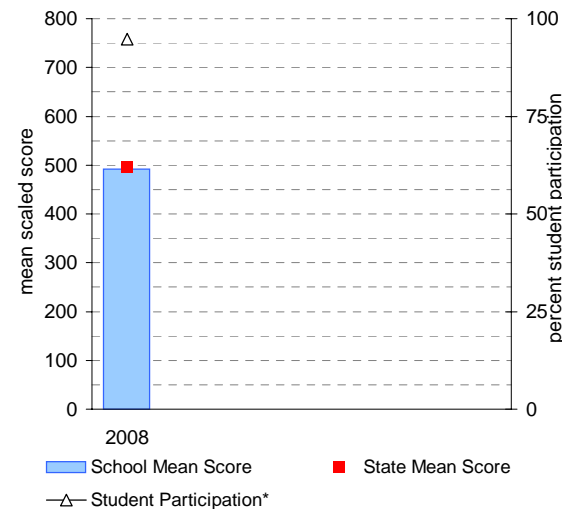


School Mean as percentile against SFO percentile range

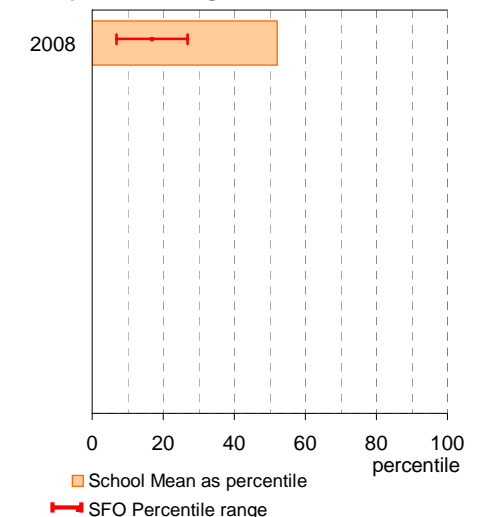


Year 5

School Mean against State Mean, including Participation



School Mean as percentile against SFO percentile range



NAPLAN Year 3 and 5: Numeracy

School no: 2142

School name: Moe (Albert Street) Primary School

Source of data: Victorian Curriculum and Assessment Authority.

Explanation: The National Assessment Program - Literacy and Numeracy (NAPLAN) is conducted each year for students in Years 3, 5, 7 and 9. For more detailed NAPLAN data, refer to the NAPLAN Data Service website at <http://naplands.vcaa.vic.edu.au>. A reference guide for analysing NAPLAN data is available at <http://www.vcaa.vic.edu.au/vcaa/prep10/naplan/schools/analysingnaplandata.pdf>.

Notes: * % student participation = (students who participated in NAPLAN / February enrolments) * 100

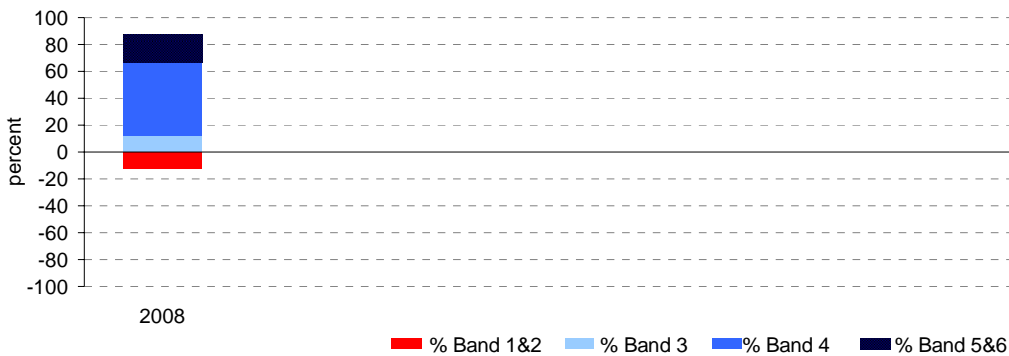
Year 3

	student participation		Percent of students by NAP Band						Mean Scaled Score	
	(n)	(%)*	Band 1	Band 2	Band 3	Band 4	Band 5	Band 6	School	State
2008	33	92	3	9	12	55	12	9	392.0	416.1

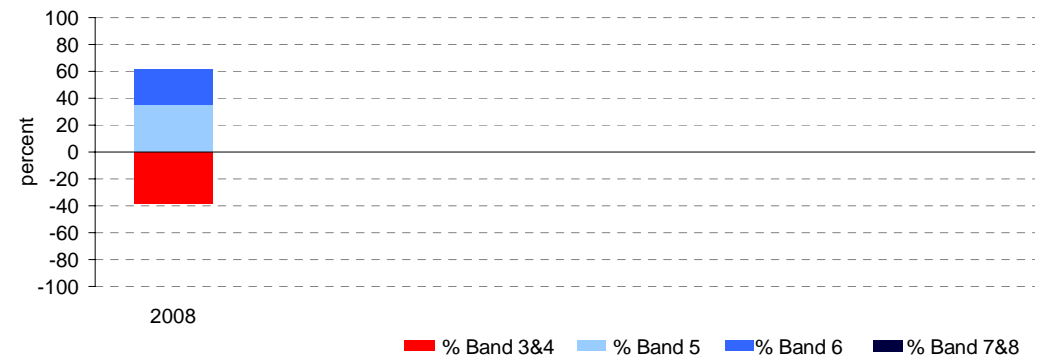
Year 5

	student participation		Percent of students by NAP Band						Mean Scaled Score	
	(n)	(%)*	Band 3	Band 4	Band 5	Band 6	Band 7	Band 8	School	State
2008	34	89	6	32	35	27	0	0	445.5	487.8

Percent of students by NAP Band

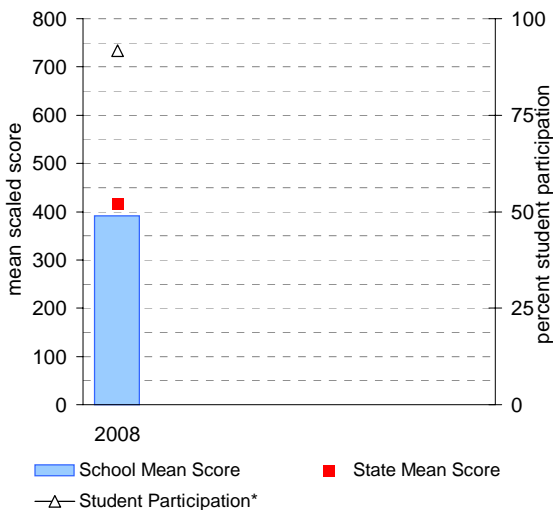


Percent of students by NAP Band

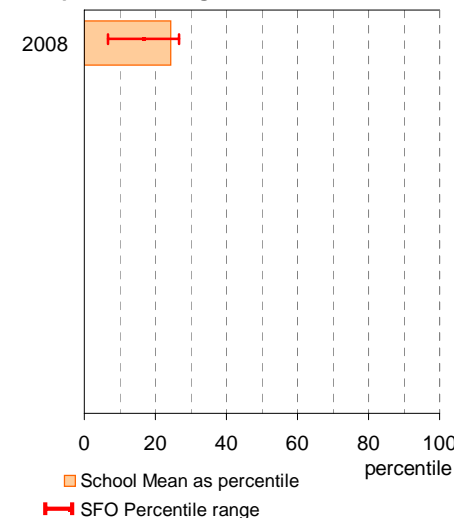


Year 3

School Mean against State Mean, including Participation

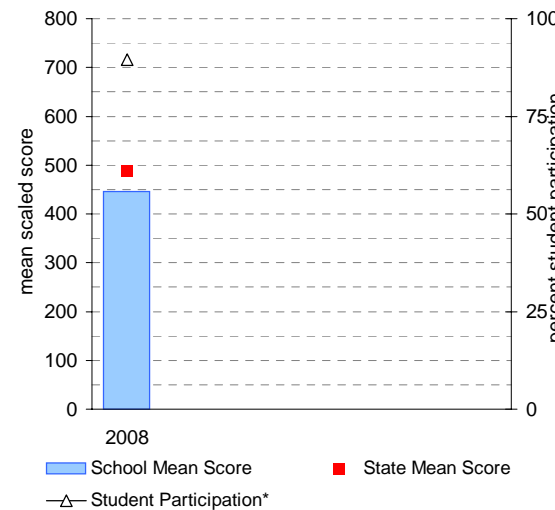


School Mean as percentile against SFO percentile range

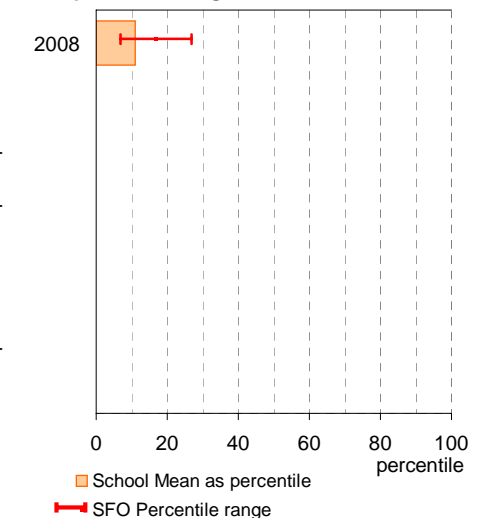


Year 5

School Mean against State Mean, including Participation



School Mean as percentile against SFO percentile range



AIM Year 3 and 5: Reading

School no: 2142

School name: Moe (Albert Street) Primary School

Source of data: Victorian Curriculum and Assessment Authority.

Explanation: The Achievement Improvement Monitor (AIM) was a statewide assessment program conducted each year up until and including 2007 for students in Years 3, 5, 7 and 9. This has now been replaced by NAPLAN. For more detailed AIM data, refer to the AIM Data Service website at <http://aimds.vcaa.vic.edu.au>.

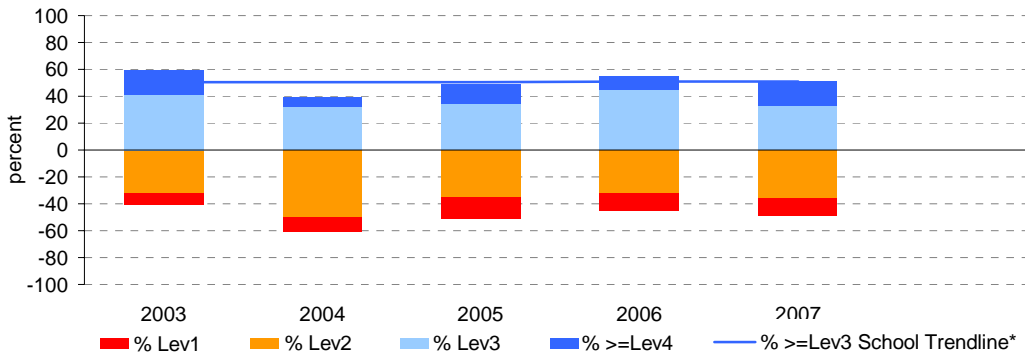
Notes: * The school trendline is only plotted when there is data for each calendar year.

** % student participation = (students who participated in AIM / Feb enrolments) * 100

Year 3

	student participation		Percent of students by VEL5 level							Mean CSF / VEL5 Score	
	(n)	(%)**	Lev1	Lev2	Lev3	Lev4	Lev5	Lev6	Lev6E	School	State
2003	34	85	9	32	41	18	0	0	0	2.2	2.3
2004	28	85	11	50	32	7	0	0	0	2.0	2.3
2005	55	98	16	35	35	15	0	0	0	2.0	2.4
2006	40	91	13	33	45	10	0	0	0	2.0	2.3
2007	39	98	13	36	33	18	0	0	0	2.1	2.3

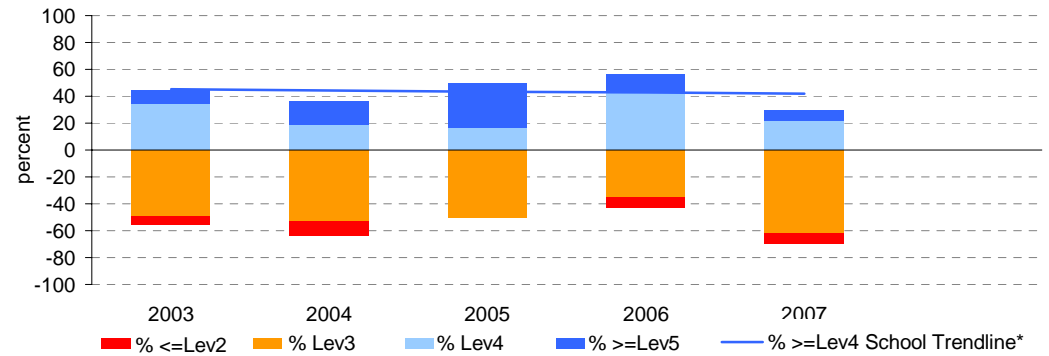
Percent of students by VEL5 level



Year 5

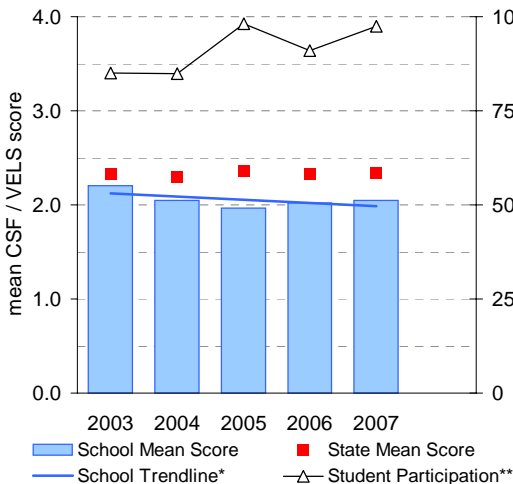
	student participation		Percent of students by VEL5 level						Mean CSF / VEL5 Score		
	(n)	(%)**	Lev1	Lev2	Lev3	Lev4	Lev5	Lev6	Lev6E	School	State
2003	49	86	0	6	49	35	10	0	0	2.9	3.2
2004	47	81	0	11	53	19	17	0	0	2.9	3.2
2005	36	78	0	0	50	17	33	0	0	3.3	3.2
2006	37	95	0	8	35	43	14	0	0	3.1	3.1
2007	50	96	0	8	62	22	8	0	0	2.8	3.2

Percent of students by VEL5 level

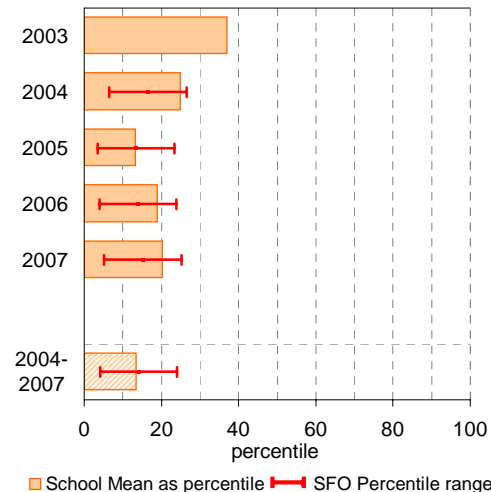


Year 3

School Mean against State Mean, including Participation

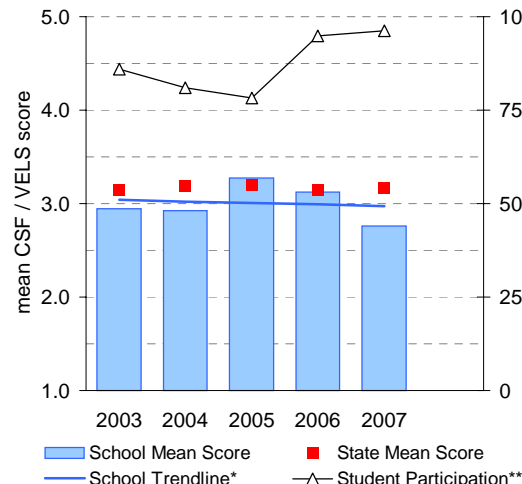


School Mean as percentile against SFO percentile range

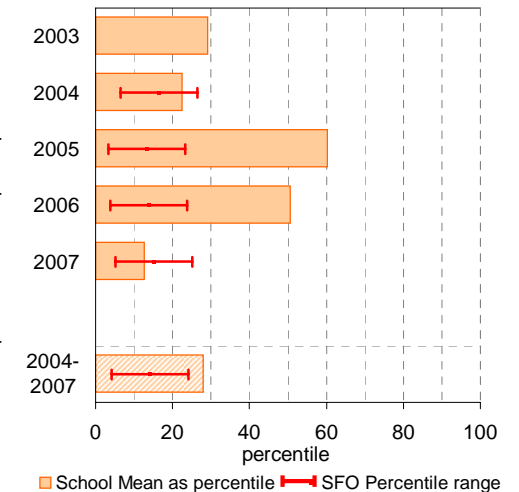


Year 5

School Mean against State Mean, including Participation



School Mean as percentile against SFO percentile range



AIM Year 3 and 5: Number

School no: 2142

School name: Moe (Albert Street) Primary School

Source of data: Victorian Curriculum and Assessment Authority.

Explanation: The Achievement Improvement Monitor (AIM) was a statewide assessment program conducted each year up until and including 2007 for students in Years 3, 5, 7 and 9. This has now been replaced by NAPLAN. For more detailed AIM data, refer to the AIM Data Service website at <http://aimds.vcaa.vic.edu.au>.

Notes: * The school trendline is only plotted when there is data for each calendar year.
 ** % student participation = (students who participated in AIM / Feb enrolments) * 100

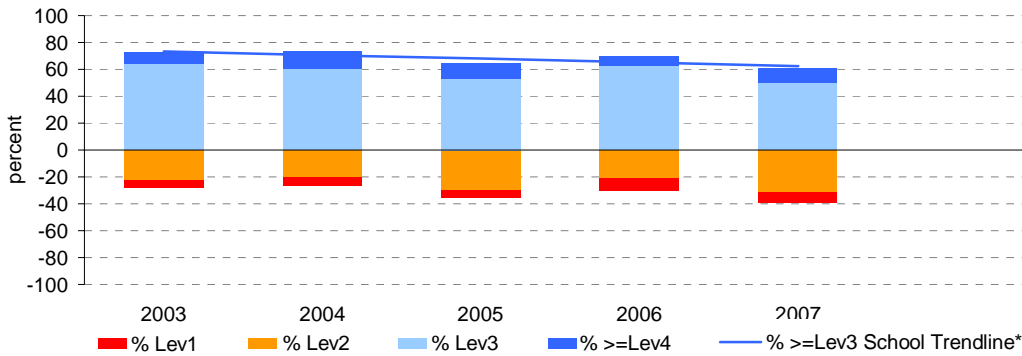
Year 3

	student participation		Percent of students by VEL5 level							Mean CSF / VEL5 Score	
	(n)	(%)**	Lev1	Lev2	Lev3	Lev4	Lev5	Lev6	Lev6E	School	State
2003	36	90	6	22	64	8	0	0	0	2.2	2.4
2004	30	91	7	20	60	13	0	0	0	2.3	2.4
2005	53	95	6	30	53	11	0	0	0	2.1	2.4
2006	43	98	9	21	63	7	0	0	0	2.1	2.4
2007	38	95	8	32	50	11	0	0	0	2.1	2.4

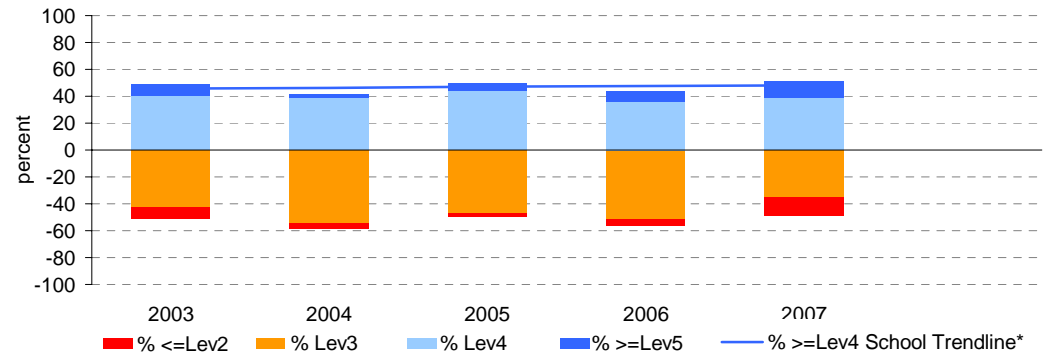
Year 5

	student participation		Percent of students by VEL5 level							Mean CSF / VEL5 Score	
	(n)	(%)**	Lev1	Lev2	Lev3	Lev4	Lev5	Lev6	Lev6E	School	State
2003	47	82	0	9	43	40	9	0	0	3.0	3.1
2004	46	79	0	4	54	39	2	0	0	2.8	3.2
2005	36	78	0	3	47	44	6	0	0	3.0	3.2
2006	39	100	0	5	51	36	8	0	0	3.1	3.2
2007	51	98	0	14	35	39	12	0	0	3.0	3.2

Percent of students by VEL5 level

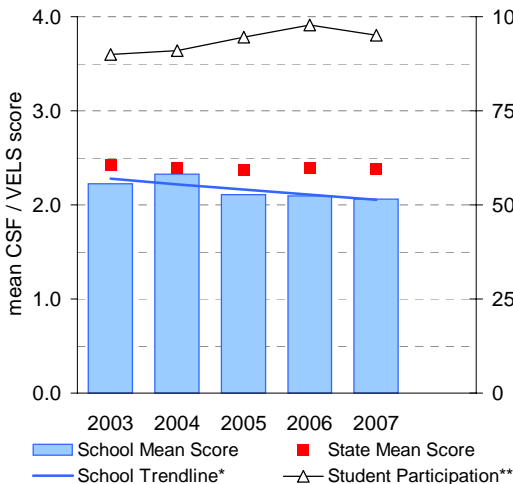


Percent of students by VEL5 level

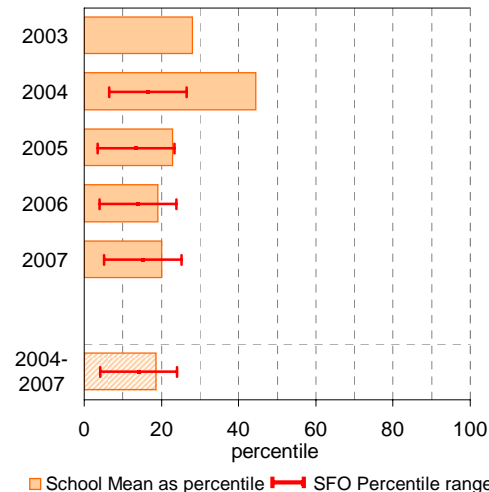


Year 3

School Mean against State Mean, including Participation

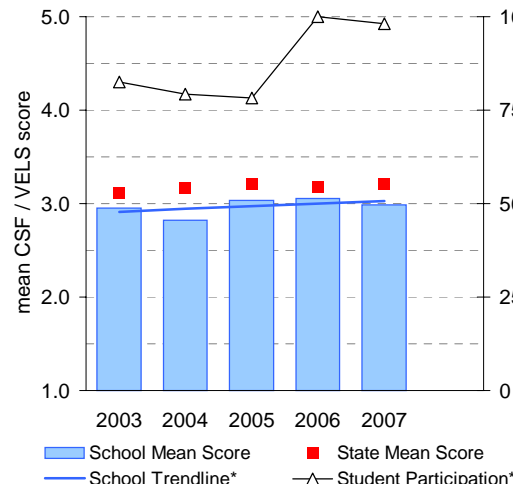


School Mean as percentile against SFO percentile range

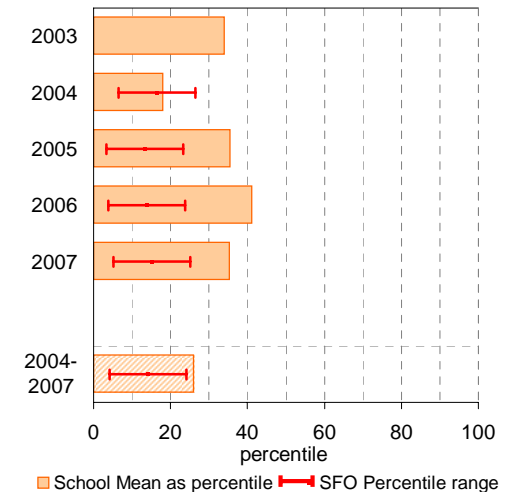


Year 5

School Mean against State Mean, including Participation



School Mean as percentile against SFO percentile range



Teacher Assessment of Student Progress (PSD students)

School no: 2142

School name: Moe (Albert Street) Primary School

Explanation: Teachers assess their students' progress against the 8 VELs Domains / CSF KLAs using a 6-point scale (students in special schools and those who cannot be assessed against the VELs / CSF).

Source of data: Data transmitted from school to DEECD via an online web-form.

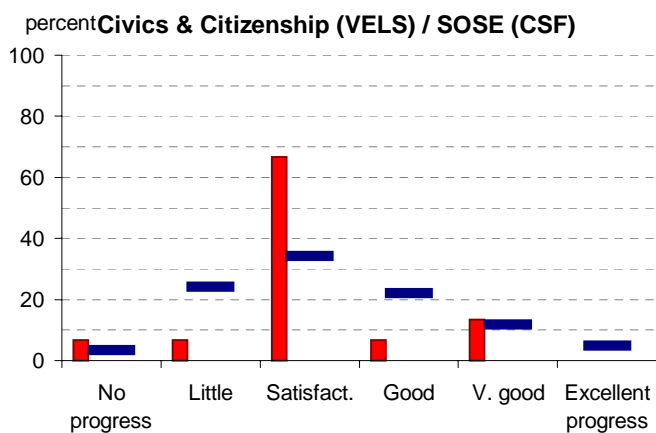
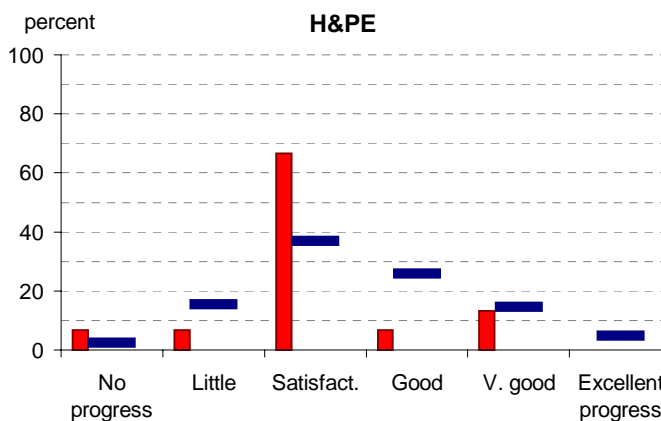
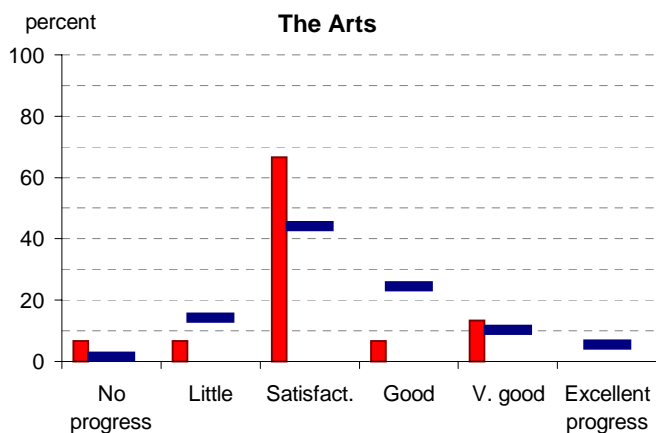
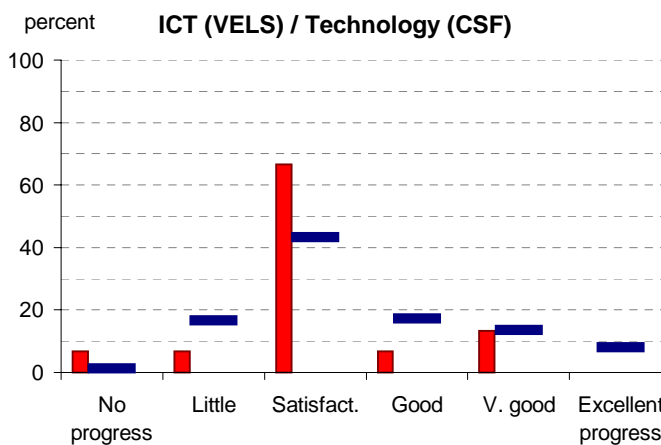
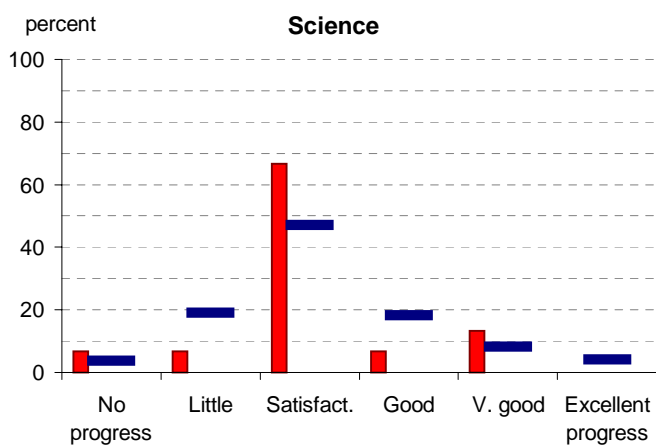
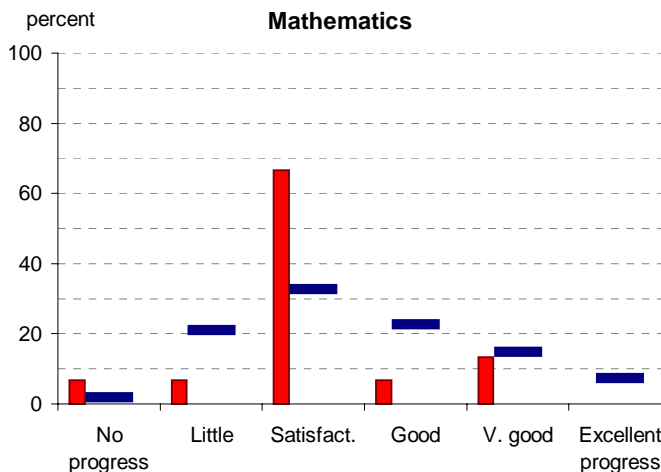
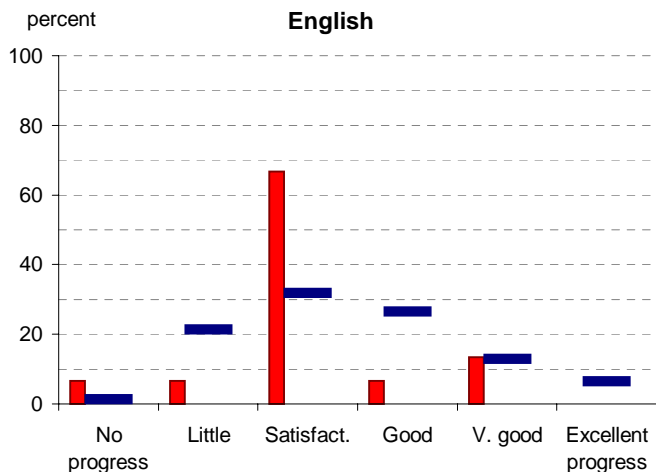
	No progress (%)	Little progress (%)	Satisfactory progress (%)	Good progress (%)	Very good progress (%)	Excellent progress (%)	Total students assessed ¹ (no.)
2004 (by CSF KLA)							
English	7	7	67	7	13		15
Mathematics	7	7	67	7	13		15
Science	7	7	67	7	13		15
Technology	7	7	67	7	13		15
The Arts	7	7	67	7	13		15
H&PE	7	7	67	7	13		15
SOSE	7	7	67	7	13		15
2005 (by CSF KLA)							
English							
Mathematics							
Science							
Technology							
The Arts							
H&PE							
SOSE							
2006 (by VELs Domain)							
English							
Mathematics							
Science							
ICT							
The Arts							
H&PE							
Civics & Citizenship							
2007 (by VELs Domain)							
English							
Mathematics							
Science							
ICT							
The Arts							
H&PE							
Civics & Citizenship							
2008 (by VELs Domain)							
English							
Mathematics							
Science							
ICT							
The Arts							
H&PE							
Civics & Citizenship							
2007 Primary state benchmarks (by VELs Domain)*							
English	1	21	32	26	13	6	
Mathematics	2	21	33	23	15	7	
Science	4	19	47	18	8	4	
ICT	1	17	43	17	14	8	
The Arts	2	14	44	24	10	5	
H&PE	2	15	37	26	15	5	
Civics & Citizenship	3	24	34	22	12	5	

Notes: ¹ If schools provided percentages only, it is not possible to report the number of students assessed. In these cases, the total percentage (100) will be shown.

* 2008 benchmarks will be calculated in August, when data from all schools has been submitted.

Teacher Assessment of Student Progress (PSD students)

School no: 2142
 School name: Moe (Albert Street) Primary School



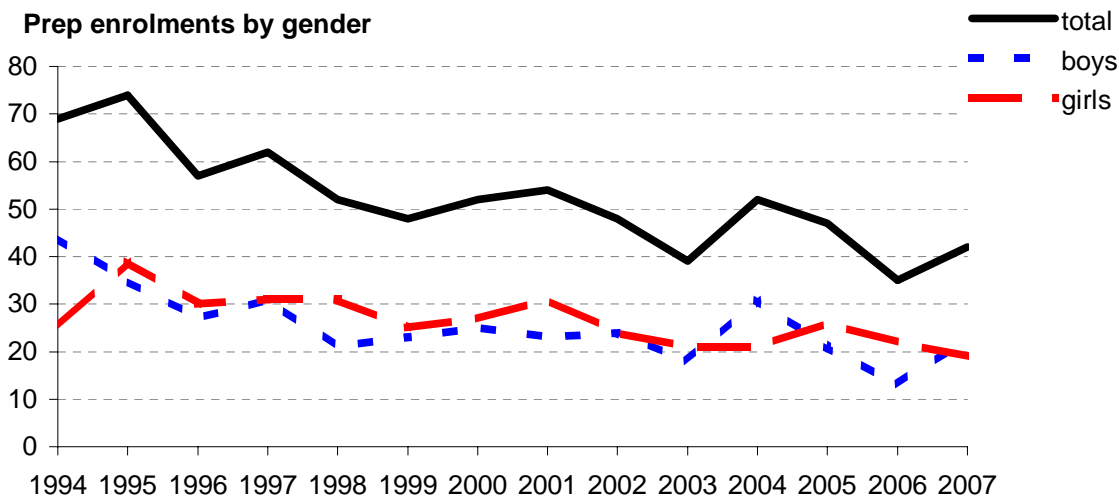
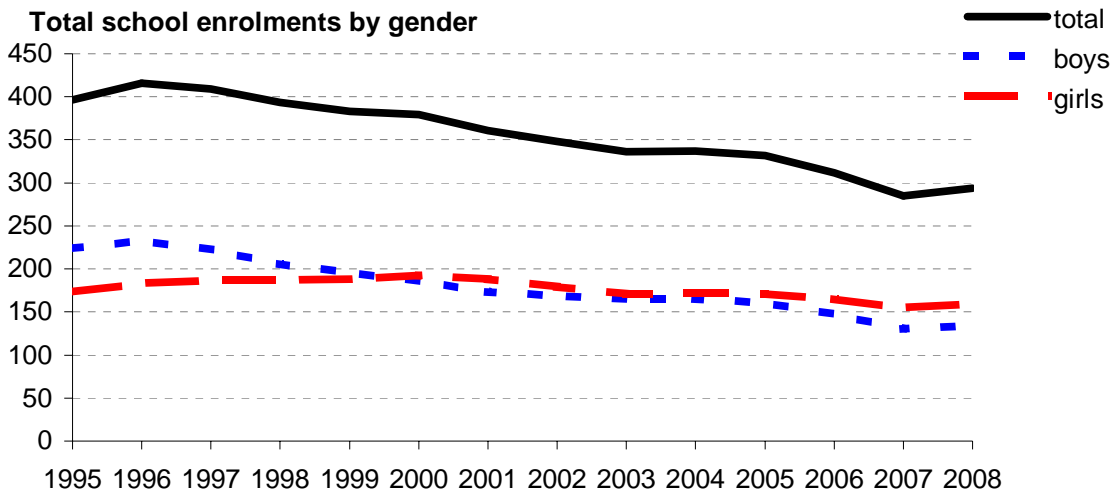
- 2004 (by CSF KLA)
- 2005 (by CSF KLA)
- 2006 (by VELLS Domain)
- 2007 (by VELLS Domain)
- 2008 (by VELLS Domain)
- 2007 Primary state benchmarks (by VELLS Domain)*

Notes: * 2008 benchmarks will be calculated in August, when data from all schools has been submitted.

Enrolments

School no: 2142
School name: Moe (Albert Street) Primary School
Explanation: Enrolments at February census.
Source of data: February census.

Year	Total school enrolment			Prep enrolment			Year 7 enrolments		
	boys	girls	total	boys	girls	total	boys	girls	total
1995	224	173	397	44	25	69			
1996	233	183	416	35	39	74			
1997	222	187	409	27	30	57			
1998	206	187	393	31	31	62			
1999	195	188	383	21	31	52			
2000	186	193	379	23	25	48			
2001	173	188	361	25	27	52			
2002	169	179	348	23	31	54			
2003	165	171	336	24	24	48			
2004	165	172	337	18	21	39			
2005	161	171	332	31	21	52			
2006	147	165	312	21	26	47			
2007	130	155	285	13	22	35			
2008	134	160	294	23	19	42			



Student Absence

School no: 2142

School name: Moe (Albert Street) Primary School

Source of data: Data retrieved electronically from CASES21.

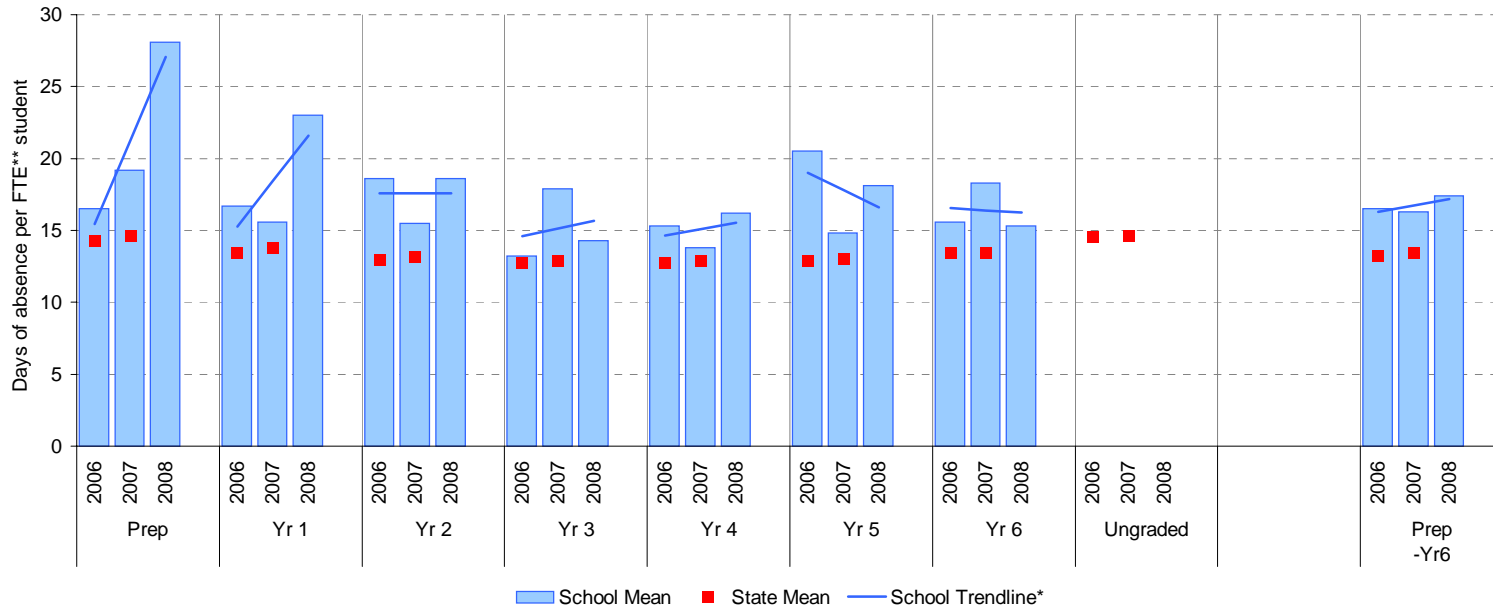
Explanation: The average (mean) number of absent days† per FTE** student.

Note that 20 absent days equates to 1 absent day per fortnight, and 10 absent days to 1 absent day per month.

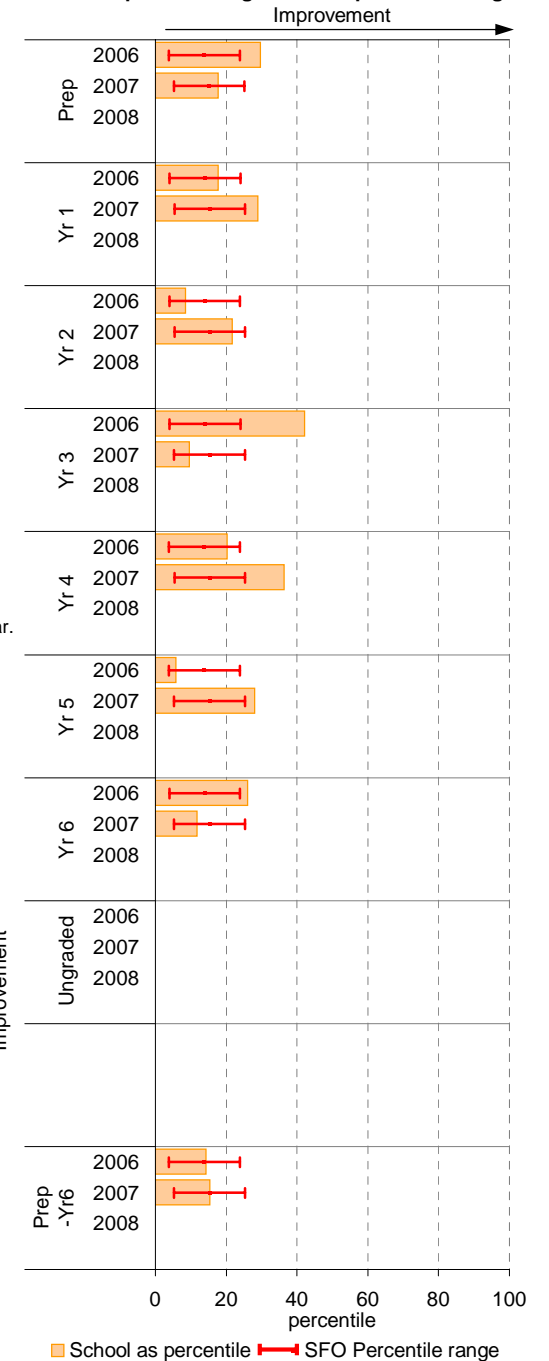
	School						2007 state benchmark^		
	2006		2007		2008		25th ptile	Mean	75th ptile
	Enrolments	Avg absent days / FTE** student	Enrolments	Avg absent days / FTE** student	Enrolments	Avg absent days / FTE** student			
Prep	45.5	16.5	34.6	19.2	2.2	28.1	12.0	14.6	17.7
Yr 1	45.0	16.7	48.9	15.6	43.4	23	11.5	13.8	16.1
Yr 2	39.0	18.6	37.7	15.5	38.2	18.6	11.0	13.1	15.1
Yr 3	42.6	13.2	41.4	17.9	43.3	14.3	10.8	12.9	14.9
Yr 4	55.0	15.3	35.8	13.8	37.8	16.2	10.8	12.9	15.0
Yr 5	39.9	20.5	54.2	14.8	40.6	18.1	10.6	13.1	15.0
Yr 6	39.9	15.6	35.8	18.3	84.3	15.3	11.0	13.4	15.7
Ungraded								14.6	
P-6 mean		16.5		16.3		17.4		13.4	

Notes: † Includes non-curriculum absences only (absence codes 200, 201, 202, 203, 205, 206, 207, 208, 209, 210, 211, 300, 401, 500, 700, 800, 804, 805, 900).
 * The school trendline is only plotted when there is data for each calendar year.
 ** FTE = Full Time Equivalent (including part-time and part-year fractions).
 ^ 2008 benchmarks and percentiles will be calculated in August, when data from all schools has been submitted.

School Mean against State Mean^



School Mean as percentile against SFO percentile range^



Parent Opinion

School no: 2142

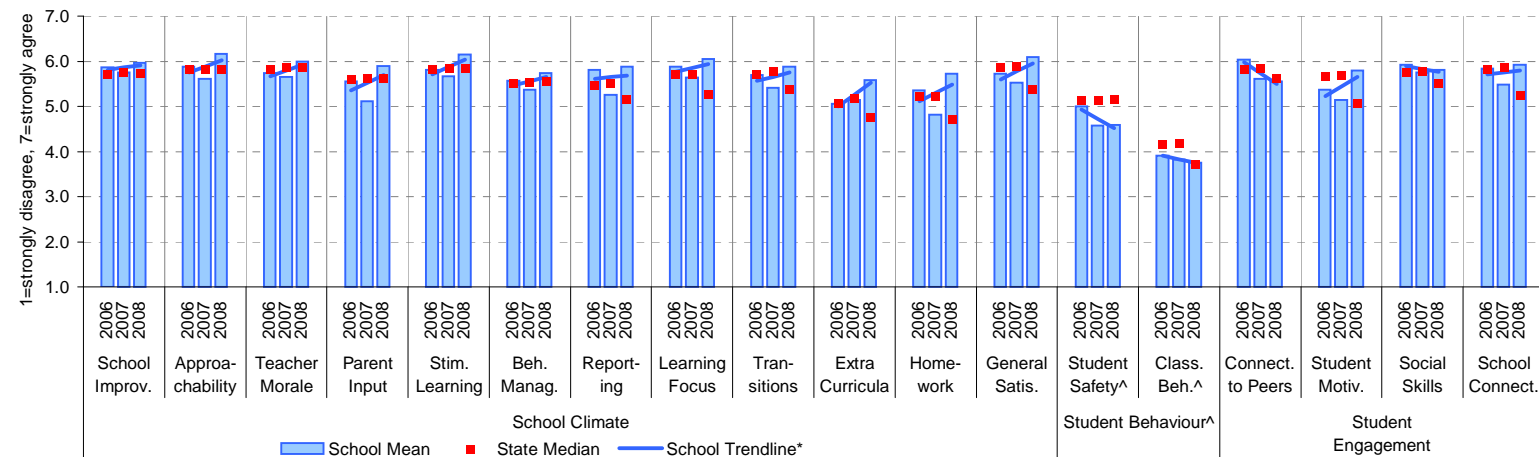
School name: Moe (Albert Street) Primary School

Explanation: A self-completion questionnaire to obtain parents' opinions of the school. Parents rated a number of statements using a scale where 1=strongly disagree & 7=strongly agree. The statements were grouped into the following categories.

Source of data: Data scanned from questionnaires completed by parents.

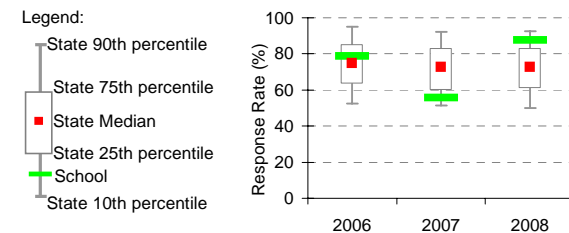
Variable No. Name	Year	School mean	State Primary median	Variable No. Name	Year	School mean	State Primary median	Variable No. Name	Year	School mean	State Primary median
1 School Improvement	2006	5.86	5.71	8 Learning Focus	2006	5.88	5.71	15 Connectedness to Peers	2006	6.04	5.83
	2007	5.75	5.75		2007	5.63	5.72		2007	5.62	5.83
	2008	5.97	5.74		2008	6.05	5.27		2008	5.55	5.63
2 Approachability	2006	5.88	5.81	9 Transitions	2006	5.69	5.72	16 Student Motivation	2006	5.37	5.66
	2007	5.61	5.82		2007	5.40	5.76		2007	5.14	5.69
	2008	6.16	5.83		2008	5.88	5.37		2008	5.80	5.06
3 Teacher Morale	2006	5.74	5.82	10 Extra Curricula	2006	5.06	5.07	17 Social Skills	2006	5.93	5.76
	2007	5.66	5.86		2007	5.14	5.17		2007	5.75	5.78
	2008	6.00	5.85		2008	5.58	4.74		2008	5.81	5.51
4 Parent Input	2006	5.56	5.59	11 Homework	2006	5.35	5.23	18 School Connectedness	2006	5.84	5.83
	2007	5.11	5.62		2007	4.82	5.23		2007	5.48	5.85
	2008	5.90	5.62		2008	5.73	4.71		2008	5.93	5.24
5 Stimulating Learning	2006	5.81	5.81	12 General Satisfaction	2006	5.73	5.87	13 Student Safety^	2006	5.00	5.13
	2007	5.67	5.84		2007	5.52	5.88		2007	4.57	5.12
	2008	6.14	5.84		2008	6.09	5.37		2008	4.59	5.15
6 Behaviour Management	2006	5.56	5.51	14 Classroom Behaviour^	2006	3.91	4.15	19 School Climate	2006	5.81	5.45
	2007	5.38	5.54		2007	3.82	4.18		2007	5.25	5.51
	2008	5.74	5.55		2008	3.76	3.71		2008	5.88	5.15

School Mean against Primary State Mean



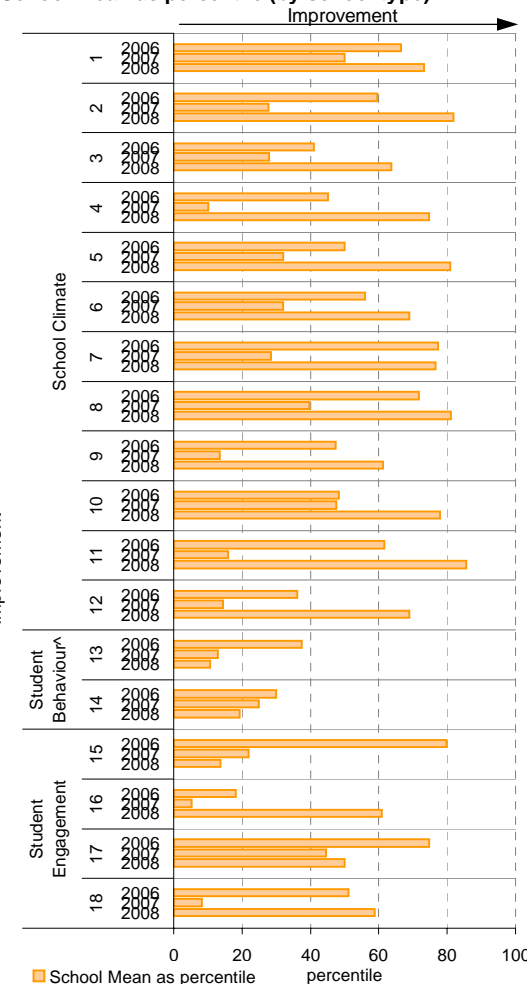
Notes: * The school trendline is plotted when there is data for each calendar year. ^ Benchmarks available for Primary, Secondary, Pri/Sec, Special and SDS schools.
 ** If there were 6 or less respondents, table data is not shown for confidentiality reasons. If there were 3 or less respondents, graph data is not shown for confidentiality reasons.
 ^ Parents' responses to all negatively phrased questions have been reversed for reporting purposes. Across all variables, the higher the score or percentile rank, the more positive parents' perceptions.

School response rate** against Primary school distribution



Year	No. of respondents	No. invited	Response Rate
2006	37	47	78.7%
2007	25	45	55.6%
2008	35	40	87.5%

School Mean as percentile (by school type)



Staff Opinion

School no: 2142

School name: Moe (Albert Street) Primary School

Explanation: A self-completion questionnaire to obtain the staff's opinions of the school. The survey was administered online using the School Organisational Health Questionnaire.

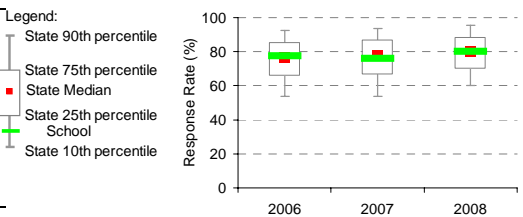
Source of data: Data transmitted from school staff to DEECD via an online survey application.

Variable	No.	Name	Year	School mean	State Primary median
1 Individual Morale			2006	74.2	75.6
			2007	73.6	76.8
			2008	75.1	78.1
2 School Morale			2006	66.0	78.1
			2007	69.2	79.2
			2008	71.9	80.8
3 Supportive Leadership			2006	73.3	80.0
			2007	74.0	80.6
			2008	75.6	82.2
4 Role Clarity			2006	72.9	79.6
			2007	76.5	80.1
			2008	77.9	81.3
5 Professional Interaction			2006	71.4	80.7
			2007	70.1	81.9
			2008	77.2	83.2
6 Participative Decision-Making			2006	70.6	75.1
			2007	65.0	76.3
			2008	77.1	77.4
7 Goal Congruence			2006	75.6	81.7
			2007	77.6	82.6
			2008	81.5	83.7

Variable	No.	Name	Year	School mean	State Primary median
8 Appraisal & Recognition			2006	66.5	71.6
			2007	66.7	73.1
			2008	73.3	75.0
9 Professional Growth			2006	67.7	74.2
			2007	67.8	76.0
			2008	66.9	76.9
10 Curriculum Coordination			2006	65.6	75.0
			2007	63.5	75.6
			2008	76.6	77.9
11 Effective Discipline Policy			2006	71.9	79.9
			2007	74.3	80.9
			2008	72.4	82.0
12 Student Orientation			2006	77.9	86.1
			2007	76.8	86.6
			2008	83.3	87.5
13 Student Motivation			2006	66.6	76.8
			2007	65.0	77.9
			2008	73.2	79.5
14 Student Decision-Making			2006	63.9	69.4
			2007	63.4	71.3
			2008	71.3	72.9

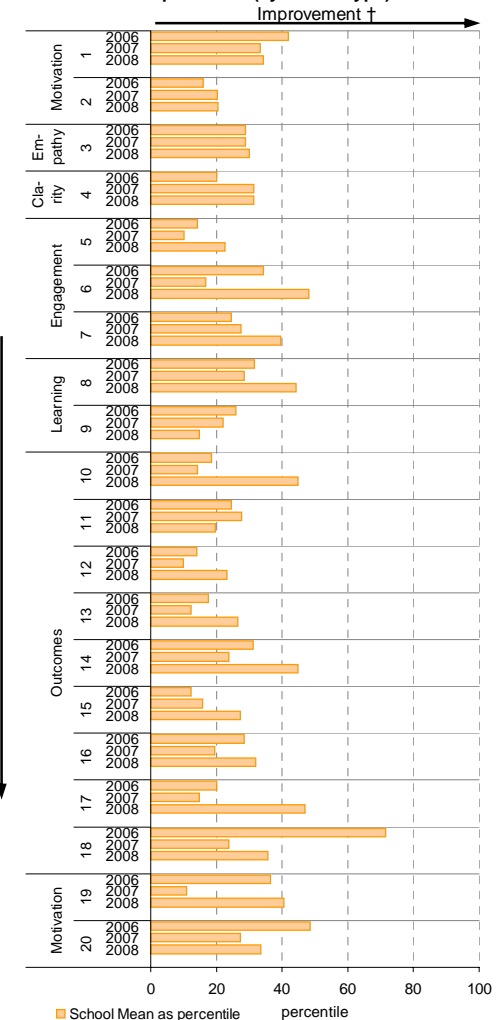
Variable	No.	Name	Year	School mean	State Primary median
15 Learning Environment			2006	70.6	81.3
			2007	72.7	82.5
			2008	79.3	84.1
16 Student Misbehaviour			2006	32.5	21.7
			2007	36.4	21.5
			2008	27.6	20.0
17 Classroom Misbehaviour			2006	20.3	13.8
			2007	21.0	13.3
			2008	13.1	12.6
18 Excessive Work Demands			2006	35.2	42.9
			2007	53.5	43.2
			2008	46.9	41.7
19 Individual Distress			2006	24.3	21.6
			2007	32.0	21.1
			2008	21.7	20.0
20 School Distress			2006	29.4	28.8
			2007	36.8	28.3
			2008	32.5	26.7

School response rate** against Primary school distribution

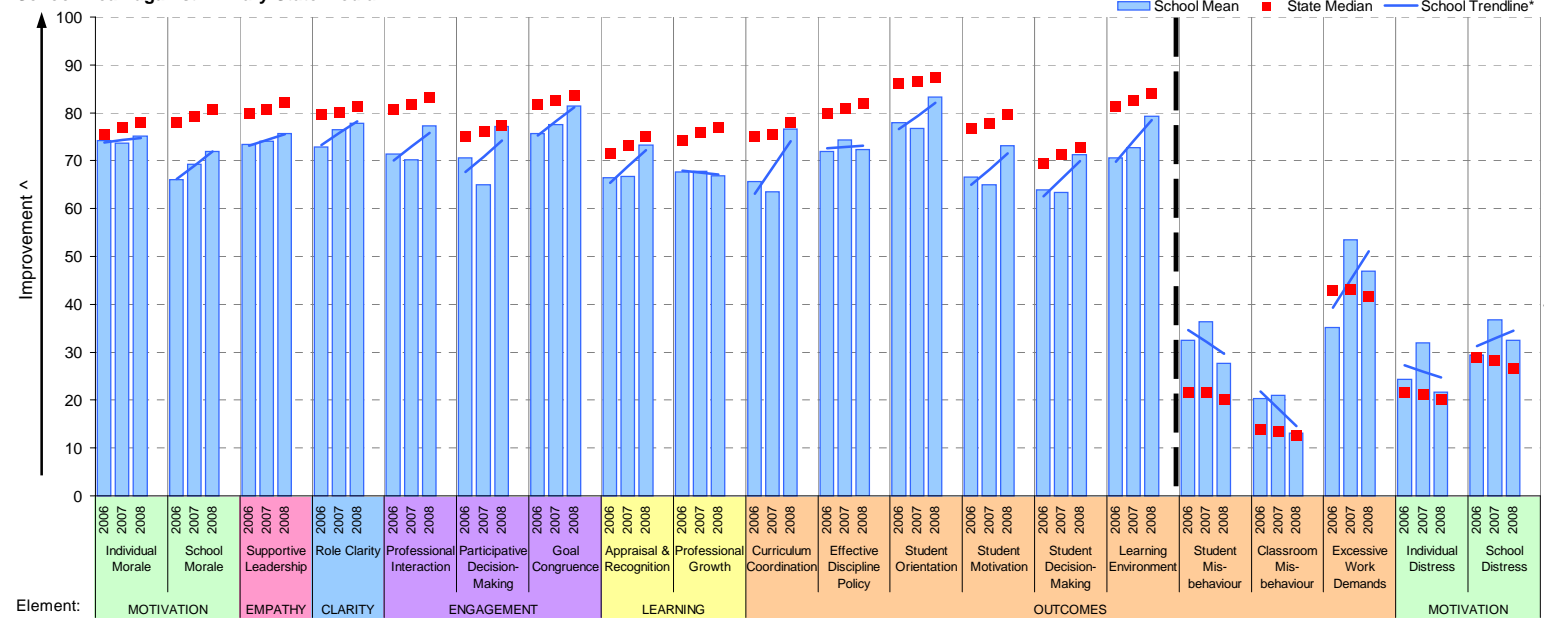


	No. of respondents	No. invited	Response Rate
2006	24	31	77%
2007	25	33	76%
2008	24	30	80%

School Mean as percentile (by school type)



School Mean against Primary State Median



Notes: * The school trendline is being trialled. It is only plotted when there is data for each calendar year.

** If there were 6 or less respondents, table data is not shown for confidentiality reasons. If there were 3 or less respondents, graph data is not shown for confidentiality reasons.

^ The higher the school mean, the more positive the outcome for variables 1 to 15. The lower the school mean, the more positive the outcome for variables 16 to 20.

† The higher the school percentile, the more positive the outcome for all variables.

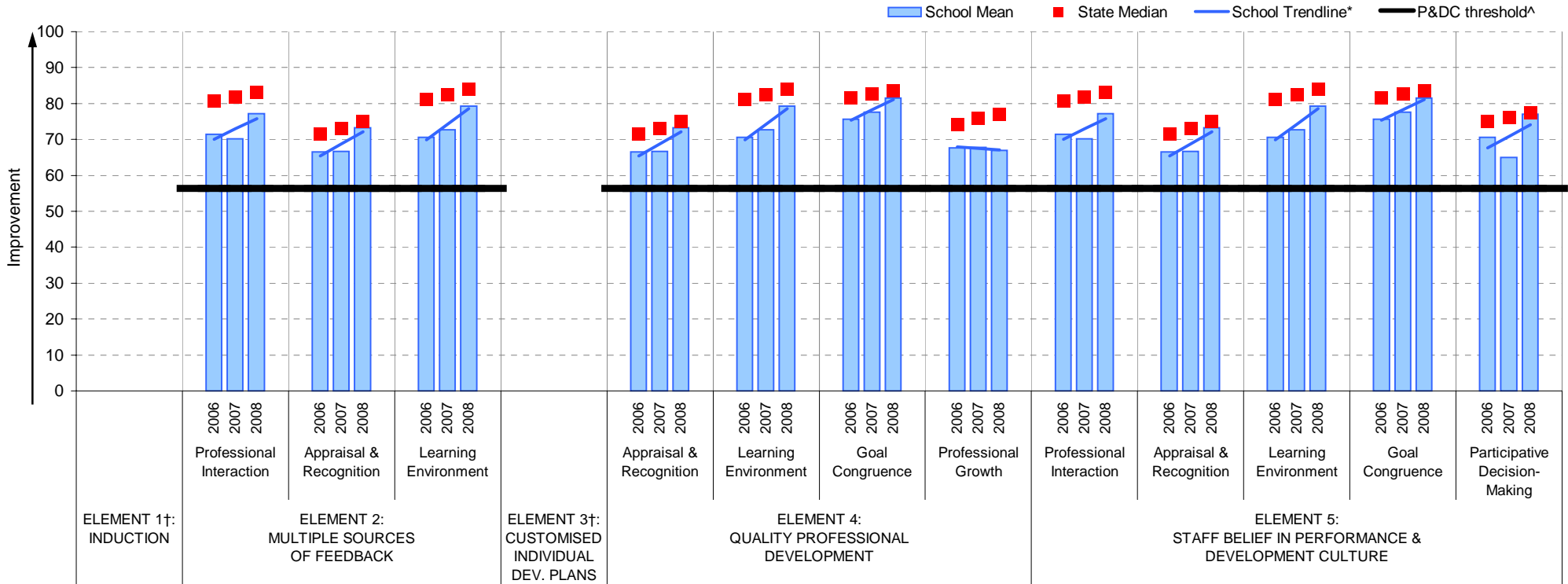
^^ Benchmarks are available for Primary, Secondary, Pri/Sec, Special & SDS schools.

Performance & Development Culture (P&DC)^{††}

NEW

School no: 2142
School name: Moe (Albert Street) Primary School
Explanation: The data on this page refers to the Staff Opinion Survey.
Source of data: Data transmitted from school staff to DEECD via an online survey application.

School Mean against Primary State Median



- Notes:
- †† An assessment of the correlation between the P&DC Questionnaire and the Staff Opinion Survey was undertaken using data from Victorian Government schools that completed both surveys from 2005 to 2007 (ie. 699 schools). This led to the identification of the components of the Staff Opinion Survey that could be used to assist schools with the ongoing monitoring of their performance and development culture. Refer to the P&DC website for further information: <http://www.education.vic.gov.au/management/schoolimprovement/panddc/default.htm>. For numerical results relating to the above graph, refer to the Staff Opinion Survey page in this report.
 - † Note that there is no significant correlation between the Staff Opinion Survey and P&DC elements 1 (Induction) and 3 (Customised Individual Development Plans).
 - ^ The P&DC threshold was derived from the P&DC Questionnaire 'percent favourable' methodology where a school is considered at the standard of accreditation when their Element score is >75% favourable (ie. at least 75% of staff selected the top two response categories in the P&DC Questionnaire).
 - * The school trendline is only plotted when there is data for each calendar year.
 - ** If there were 3 or less respondents, graph data is not shown for confidentiality reasons.
 - ^^ Benchmarks are available for Primary, Secondary, Pri/Sec, Special & SDS schools.

Staff Sick Leave

School no: 2142

School name: Moe (Albert Street) Primary School

Explanation: The number of non-certificated and total sick leave days taken per staff member.

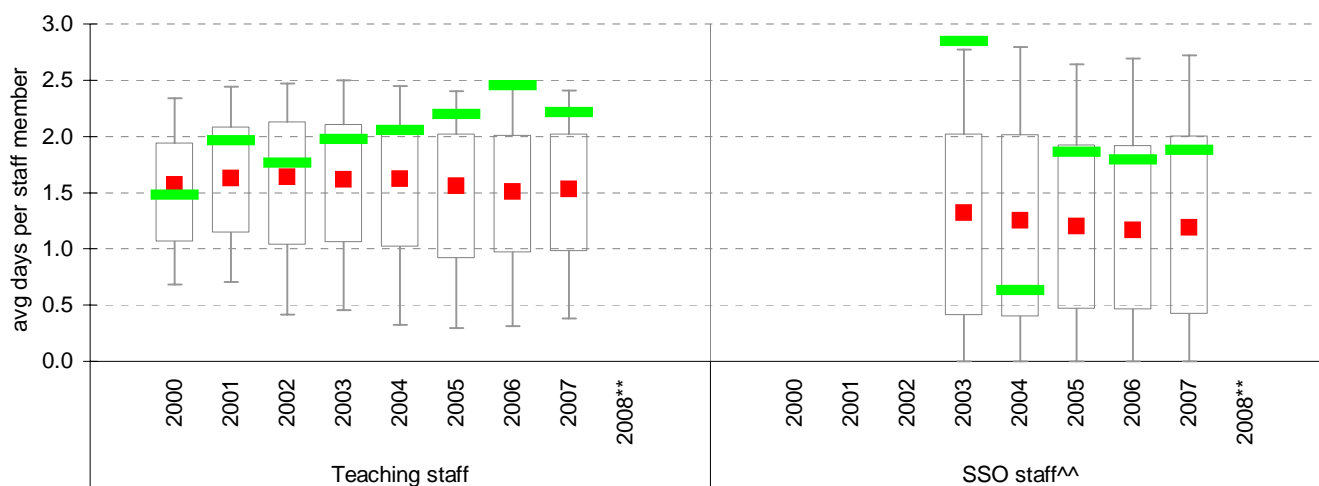
A detailed explanation on how staff sick leave is calculated is provided in the Annual Reports Frequently Asked Questions page of the Standards website (<http://www.sofweb.vic.edu.au/standards/account/arepq.htm>).

Source of data: Human Resources Management System (HRMS)^.

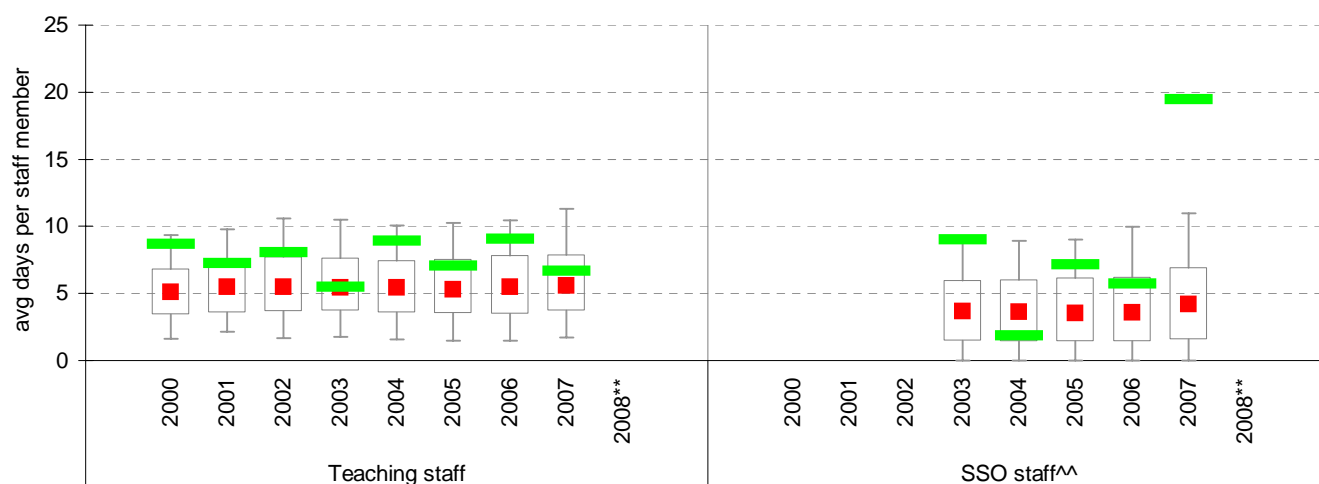
Staff Type	Non-Certificated sick leave days per staff member^									2007 State Median**
	2000	2001	2002	2003	2004	2005	2006	2007	2008**	
Teacher	1.48	1.96	1.77	1.98	2.06	2.20	2.45	2.21		1.53
SSO^^					0.63	1.86	1.79	1.88		1.19

Staff Type	Total sick leave days per staff member^									2007 State Median**
	2000	2001	2002	2003	2004	2005	2006	2007	2008**	
Teacher	8.70	7.27	8.08	5.49	8.91	7.04	9.07	6.69		5.61
SSO^^					1.85	7.15	5.73	19.45		4.20

NON-CERTIFICATED sick leave



TOTAL sick leave

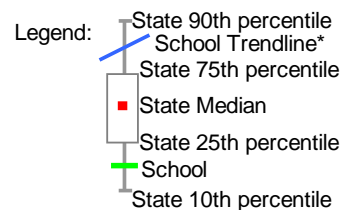


Note: * The school trendline is only plotted when there is data for each calendar year.

** Data for 2008 will be available in April / May of 2009.

^ There may be some discrepancy between the results from CASES & those from HRMS. The latter are considered to be more accurate.

^^ Data for SSO (School Services Officer) staff is only available from 2003.



Teaching Staff Retention

School no: 2142

School name: Moe (Albert Street) Primary School

Explanation: The retention rate of teaching staff is determined by matching staff payroll records for the last pay in June of one year (Year A), to the last pay in June of the following year (Year B).

Source of data: Human Resources Management System (HRMS).

Teaching Staff*

Year A	Year B	Number of Teaching Staff in Year A	Number of Teaching Staff retained in Year B	Teaching Staff Retention Rate	Statewide Average
2005	2006	23	21	91%	87%
2006	2007	22	22	100%	86%
2007	2008	23	21	91%	84%

Of the 23 teaching service staff at June 2005 (including those on leave without pay), 21 or 91% were still at the school at June 2006. This figure across all Government schools was 87%.

Of the 22 teaching service staff at June 2006 (including those on leave without pay), 22 or 100% were still at the school at June 2007. This figure across all Government schools was 86%.

Of the 23 teaching service staff at June 2007 (including those on leave without pay), 21 or 91% were still at the school at June 2008. This figure across all Government schools was 84%.

Ongoing Teaching Staff* ^

Year A	Year B	Number of Ongoing Teaching Staff in Year A	Number of Ongoing Teaching Staff retained in Year B	Ongoing Teaching Staff Retention Rate	Statewide Average
2005	2006	22	21	95%	91%
2006	2007	22	22	100%	90%
2007	2008	21	19	91%	88%

Of the 22 ongoing teaching service staff at June 2005 (including those on leave without pay), 21 or 95% were still at the school at June 2006. This figure across all Government schools was 91%.

Of the 22 ongoing teaching service staff at June 2006 (including those on leave without pay), 22 or 100% were still at the school at June 2007. This figure across all Government schools was 90%.

Of the 21 ongoing teaching service staff at June 2007 (including those on leave without pay), 19 or 91% were still at the school at June 2008. This figure across all Government schools was 88%.

Notes: * Teaching staff includes Principal class, Teacher class and Instructor class. Teaching staff employed as visiting teachers, guidance officers, curriculum consultants, etc. are excluded as they are not charged to a particular school.

^ Not including fixed term staff, except for where staff had changed from ongoing in Year A to fixed term in Year B.

Bank Balances

School no: 2142

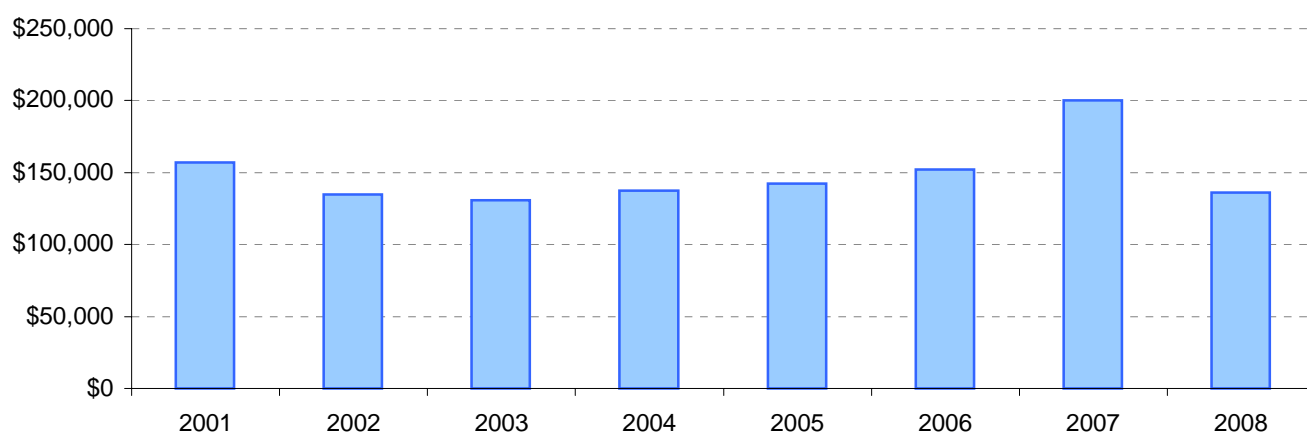
School name: Moe (Albert Street) Primary School

Explanation: Account balance figures include official and investment accounts, and are calculated by taking the opening balance at 1st January plus the total receipts at 31st December less total payments at 31st December.

Account Balances (Official plus Investment Accounts)

2001	\$157,111	2005	\$142,137
2002	\$134,715	2006	\$152,084
2003	\$130,656	2007	\$200,122
2004	\$137,417	2008	\$136,298

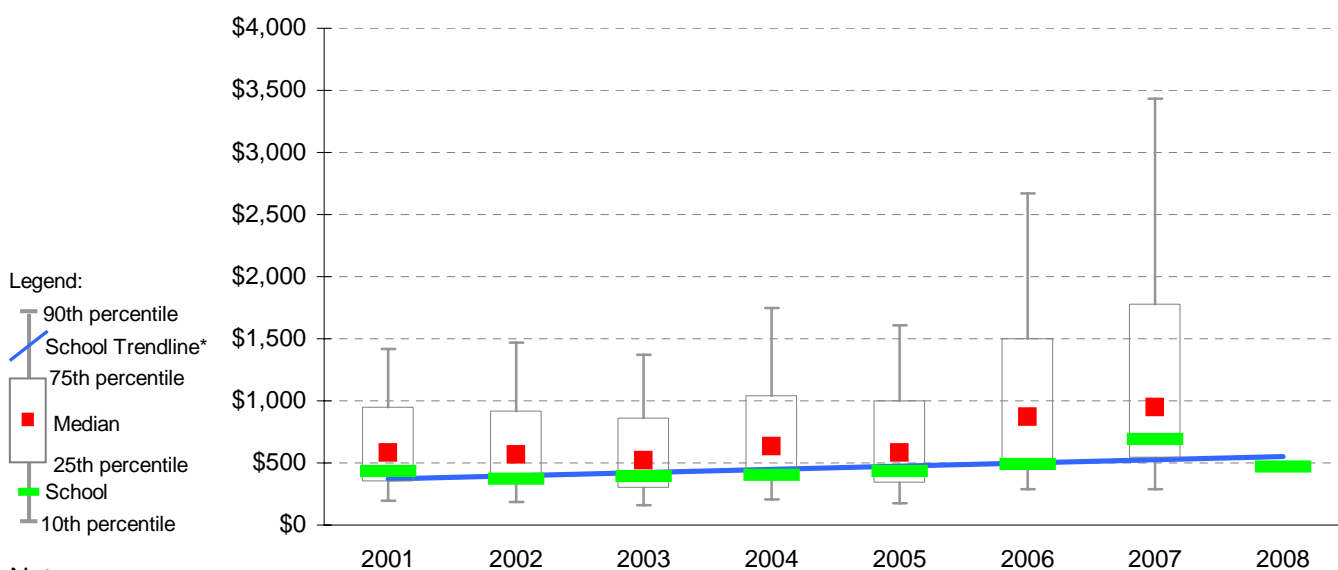
Account Balances



Account Balances (Official plus Investment Accounts) per student[†]

2001	\$433	2005	\$435
2002	\$371	2006	\$487
2003	\$394	2007	\$690
2004	\$404	2008	\$472

School account balances per student enrolled in August census plotted on state Primary benchmarks[^]



Notes:

* The school trendline is being trialled. It is only plotted when there is data for each calendar year.

† The account balance per student has been calculated to enable some comparison to be made between schools.

^ Benchmarks for primary, secondary, pri/sec, SDS, special and language schools.